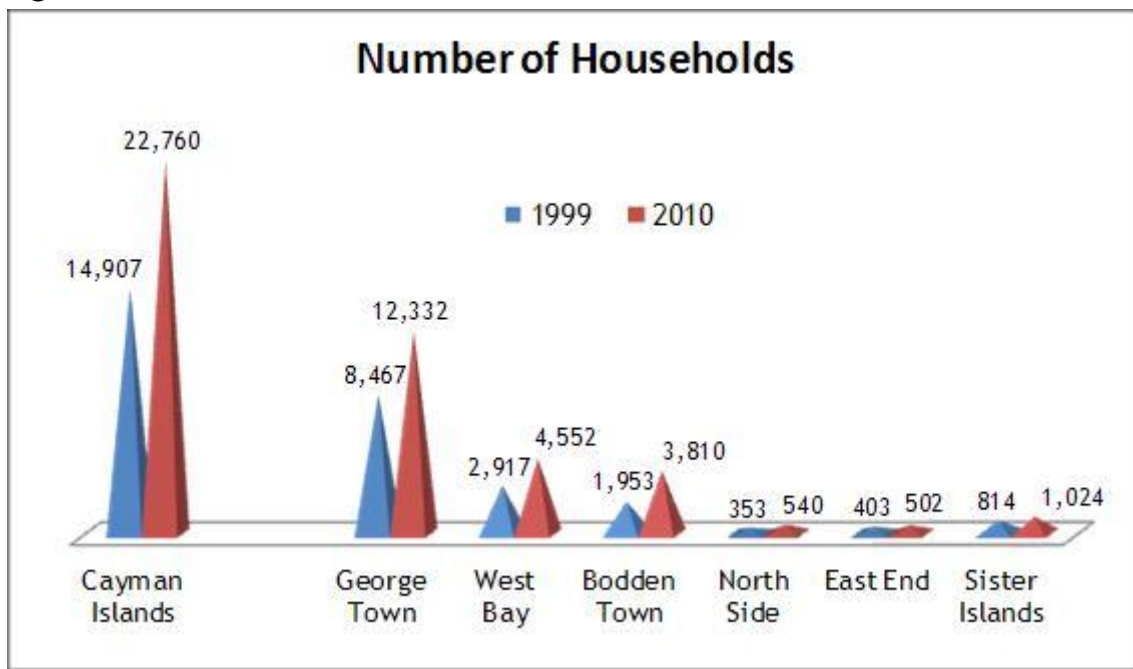


## 1.8 Households and housing characteristics

### 1.8.1 Household count

A total of 22,760 households were counted in the 2010 Census. A comparison with the 1999 Census data shows that 7,853 households were added between 1999 and 2010, which represents a 52.7 per cent increase over the 11-year period. George Town expanded by 3,865 households; West Bay by 1,635; Bodden Town by 1,857; North Side by 187; East End by 99; and the Sister Islands by 210.

Figure 1.8A:



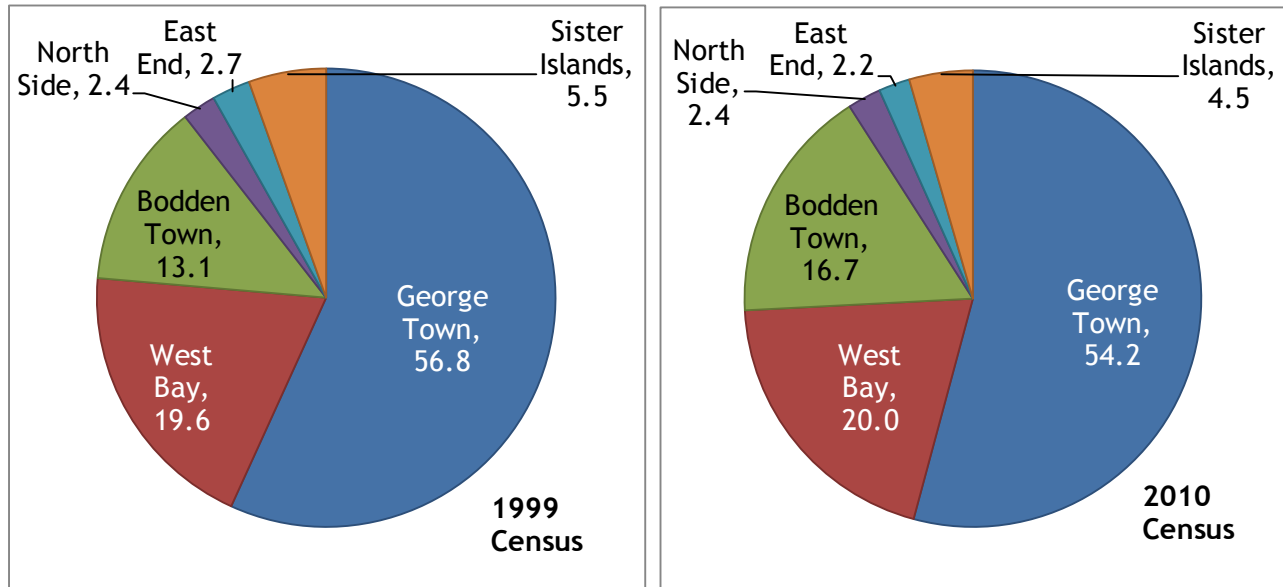
The rate of household increase was highest in Bodden Town at 95.1 percent. The increases in West Bay (56.1%) and North Side (53%) were higher than the national rate of increase.

### 1.8.2 Distribution by district

In terms of distribution, the majority (54.2%) of households in the 2010 count were located in George Town, while West Bay accounted for 20 percent and Bodden Town, 16.7 percent. North Side's and East End's share of households was 2.4 and 2.2 percent, respectively. The Sister Islands accounted for 4.5 per cent.

The percentage of households in George Town, East End and the Sister Islands declined while that of Bodden Town grew from 13.1 percent in 1999 to 16.7 percent. West Bay and North Side have relatively stable shares.

**Figure 1.8B: Comparative Distribution of Households**



### 1.8.3 Household size

The average household size was 2.4 persons per household, a decrease compared to 1999's 2.6 persons. A reduction was recorded across all districts, with the highest drop registered in East End from 3.4 persons per household to 2.8 persons.

**Figure 1.8C**

District	Average Household Size	
	1999	2010
<b>Total</b>	<b>2.6</b>	<b>2.4</b>
George Town	2.4	2.3
West Bay	2.8	2.5
Bodden Town	3.0	2.8
North Side	3.1	2.7
East End	3.4	2.8
Sister Islands	2.4	2.2

Almost one in every three households (32.4%) was a single-person household. The Sister Islands, George Town, and West Bay were more likely than the other districts to have this type of household.

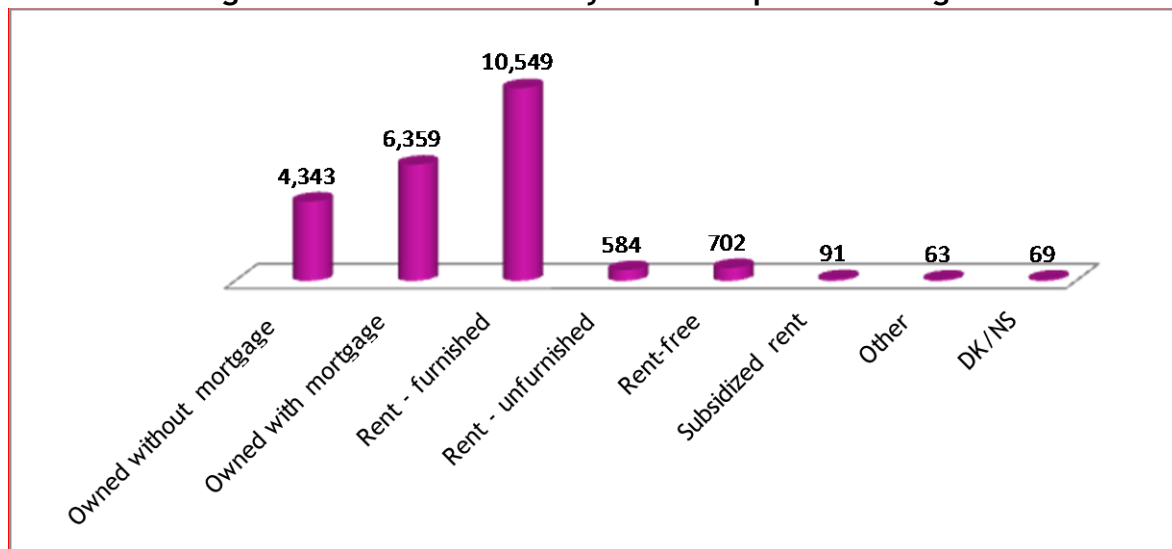
Figure 1.8D

District	Persons per Household					
	Total	1	2	3	4	5+
<b>Total</b>	<b>100.0</b>	<b>32.4</b>	<b>30.4</b>	<b>16.0</b>	<b>12.1</b>	<b>9.0</b>
George Town	100.0	35.0	32.3	14.7	11.0	6.9
West Bay	100.0	31.1	30.8	16.1	11.8	10.1
Bodden Town	100.0	25.7	24.7	19.8	16.2	13.6
North Side	100.0	26.3	28.1	17.4	14.8	13.3
East End	100.0	26.9	27.3	19.9	10.6	15.3
Sister Islands	100.0	37.3	29.8	14.7	11.1	7.0

#### 1.8.4 Ownership of dwellings

Most of the households in the country (10,549 or 46.3% of all households) lived in furnished rented dwellings. A significant number also lived in their own dwellings, with or without mortgage.

Figure 1.8E: Households by Ownership of Dwellings



These figures, when compared with 1999, indicate that there was no change in the percentage of households that rented. However, there was an increase in the percentage of household dwellings owned with mortgage from 22.7 percent in 1999 to 27.9 percent while the percentage of household dwellings owned without mortgage decreased from 22 percent to 19.1 percent.

In 2010, home ownership without mortgage was highest in East End (46.6%) and lowest in George Town (14.6%), while home ownership with mortgage was highest in Bodden Town (47.2%) and lowest in the Sister Islands (20.1%) and East End (19.7%).

**Figure 1.8F: Percentage Distribution of Households by Ownership of Dwellings**

District	Total	Owned without mortgage	Owned with mortgage	Rent - furnished	Rent - unfurnished	Rent-free	Subsidized rent	Other	DK/NS
<b>Total</b>	<b>100.0</b>	<b>19.1</b>	<b>27.9</b>	<b>46.3</b>	<b>2.6</b>	<b>3.1</b>	<b>0.4</b>	<b>0.3</b>	<b>0.3</b>
George Town	100.0	14.6	22.6	56.3	3.0	2.5	0.5	0.2	0.3
West Bay	100.0	22.9	28.1	41.8	2.8	3.5	0.2	0.2	0.3
Bodden Town	100.0	19.7	47.2	28.1	1.6	2.5	0.3	0.2	0.3
North Side	100.0	33.3	34.1	25.4	1.1	5.6	0.4	-	0.2
East End	100.0	46.6	20.1	23.3	1.6	7.8	-	-	0.6
Sister Islands	100.0	32.5	19.7	37.0	1.4	6.9	0.2	1.8	0.5

### 1.8.5 Types of dwellings

In 2010, households in the Cayman Islands occupied mainly detached houses (9,282 or 40.8% of total), and apartments (6,309 or 27.7% of total). In all the districts, except George Town, the majority of households lived in detached houses, while apartments and condominium/townhouse were the most preferred types of dwelling in George Town.

**Figure 1.8G: Number of Households by Ownership of Dwellings**

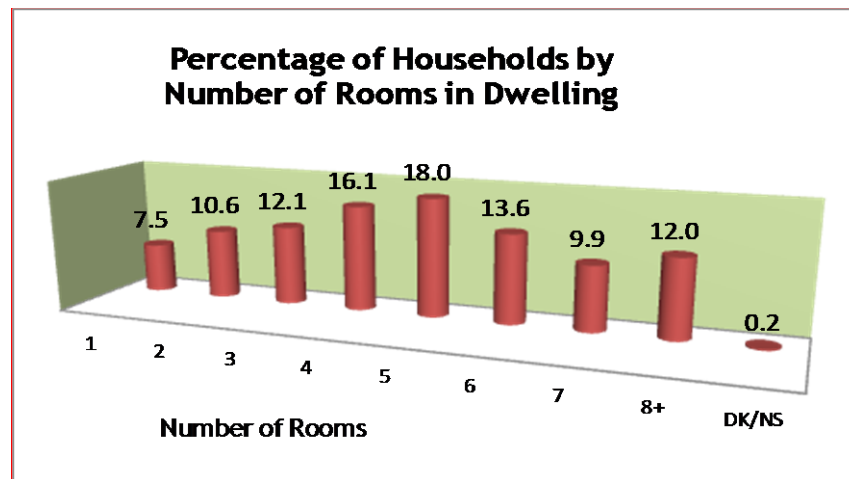
District	Detached house	Semi-detached house	Duplex	Apartment	Condominium /townhouse	Studio	One-room	Combined business/dwelling	Boat/yacht	Other	DK/NS
<b>Cayman Islands</b>	<b>9,282</b>	<b>574</b>	<b>1,377</b>	<b>6,309</b>	<b>2,895</b>	<b>673</b>	<b>1,499</b>	<b>91</b>	<b>5</b>	<b>51</b>	<b>4</b>
George Town	3,217	336	501	4,180	2,406	481	1,135	55	1	19	1
West Bay	2,178	136	340	1,257	381	98	123	27	4	7	1
Bodden Town	2,402	86	454	571	76	64	147	7	-	3	-
North Side	409	8	24	85	6	3	5	-	-	-	-
East End	361	4	32	46	4	12	34	-	-	9	-
Sister Islands	715	4	26	170	22	15	55	2	-	13	2

### 1.8.6 Number of rooms

The highest percentage of households (18%) lived in homes with five rooms, most likely comprising of two (2) bedrooms, a kitchen, a living room and dining room (bathrooms are counted separately).

There were 1,499 households (or 7.5% of total households) that lived in one-room dwellings; these households normally share bathroom and/or kitchen with another household.

Figure 1.8H



Approximately 17 percent of households stated that they shared kitchen, and 12.5 percent shared bathroom with another household. The sharing of kitchen and bathroom was most prominent among households in George Town and East End.

Figure 1.8I: Percentage of Households with Shared Bathroom or Kitchen

	Shared Bathroom	Shared Kitchen
Cayman Islands	12.5	16.8
George Town	15.1	19.3
West Bay	10.5	15.8
Bodden Town	8.4	12.4
North Side	6.5	8.9
East End	14.3	14.7
Sister Islands	6.3	11.8

### 1.8.7 Water supply

Majority of households in the Cayman Islands (87.8%) obtain their household water from mains (city water or desalinated water). However, this does not hold for all districts. Majority of households in the Sister Islands (59.7%) have cistern (rain or truck) as their main source while slightly less than half of North Side and East End households use cisterns or wells as their main sources. Nonetheless, the majority of households in all districts use bottled water as main source for drinking water.

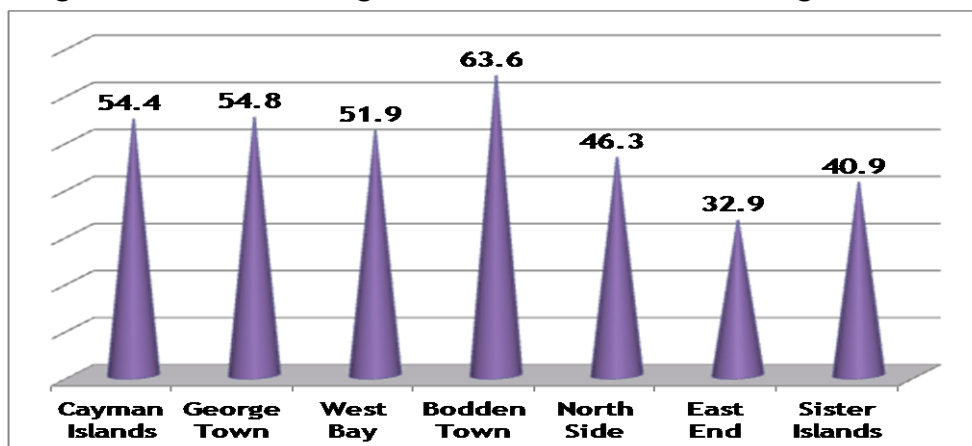
Figure 1.8J Water Supply by District, Percentage of Households

	Main Source of Household Water			Main Source of Drinking Water
	Mains (City Water or Desalinated)	Cistern (rain or truck)	Well/ Others	Bottled Water
<b>Cayman Islands</b>	87.8	6.8	5.3	78.7
<b>George Town</b>	94.5	3.6	1.9	77.4
<b>West Bay</b>	91.1	4.2	4.6	80.2
<b>Bodden Town</b>	92.1	3.0	4.9	82.9
<b>North Side</b>	52.4	22.4	25.2	88.0
<b>East End</b>	51.4	13.7	34.9	81.3
<b>Sister Islands</b>	14.1	59.7	26.3	65.4

### 1.8.8 Housing insurance

At least 54.4 percent of all households in the Cayman Islands have housing insurance in 2010, while 35.4 percent had none.

Figure 1.8K: Percentage of Households with Housing Insurance



Among the districts, households in Bodden Town are most likely to be insured (63.6%), followed by George Town (54.8%) and West Bay (51.9%). However, the reverse was found in the other districts: most households in North Side, East End and the Sister Islands have no housing insurance.

### 1.8.8 Telecommunication amenities

Households in the Cayman Islands have generally high ownership ratios for telecommunication amenities: internet (65.2%), computers (73.8%), radio (80.1%), television (94.9%) and cell phones (98.5%). On the latter, approximately 71 percent of all homes have at least two (2) cell phones. However, only 39.0 percent have a fixed phone.

Among the districts, Bodden Town consistently marked the highest telecommunication ratios with the exception of radios (topped by East End at 88.2%) and fixed phones (topped by Sister Islands at 54.2%).

Figure 1.8L-1

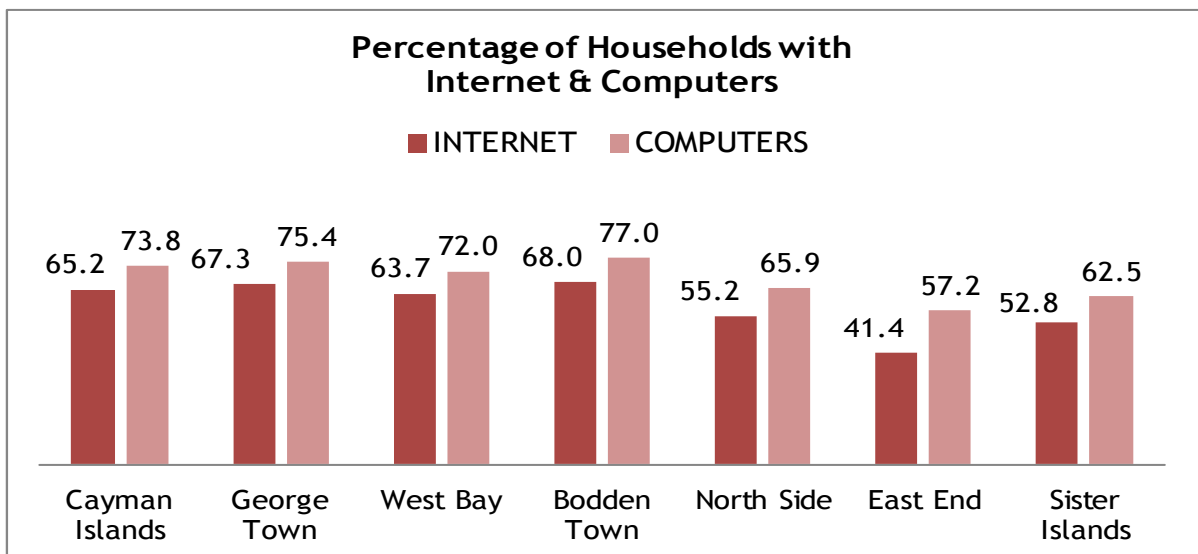


Figure 1.8L-2

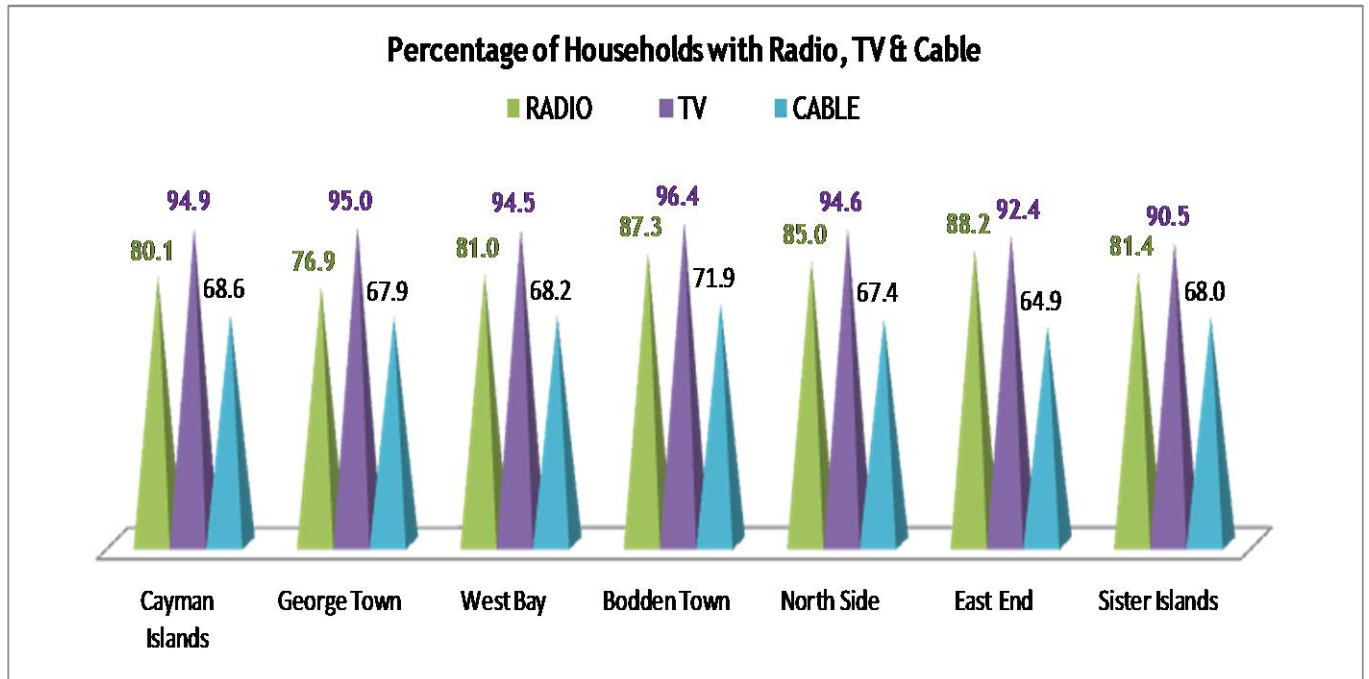


Figure 1.8L-3

