

LABOUR FORCE NEWS

LFS VOL: 1/02

Results from the Labour Force Survey conducted in April 2002 reveal that during the reference period, March 31 to April 6, 2002, the labour force of the Cayman Islands stood at 28,740. This figure was made up of 27,103 employed and 1,637 unemployed persons giving an overall unemployment rate of 5.7 percent.

These figures represent an increase in the labour force and the number of employed persons and a decline in the number of unemployed persons and the unemployment rate when compared with the figures from the October 2001 Labour Force Survey. The corresponding figures for the October survey put the Labour Force at 27,971, comprising of 25,862 employed and 2,109 unemployed persons and an unemployment rate of 7.5 percent.

Closer examination of the results of the April Labour Force Survey shows that the labour force increased by 769 or by 2.7 percent over the October 2001 figure. The number of employed persons, however increased by 1,241 while the number of unemployed persons declined by 472 over the same period.

THE LABOUR FORCE

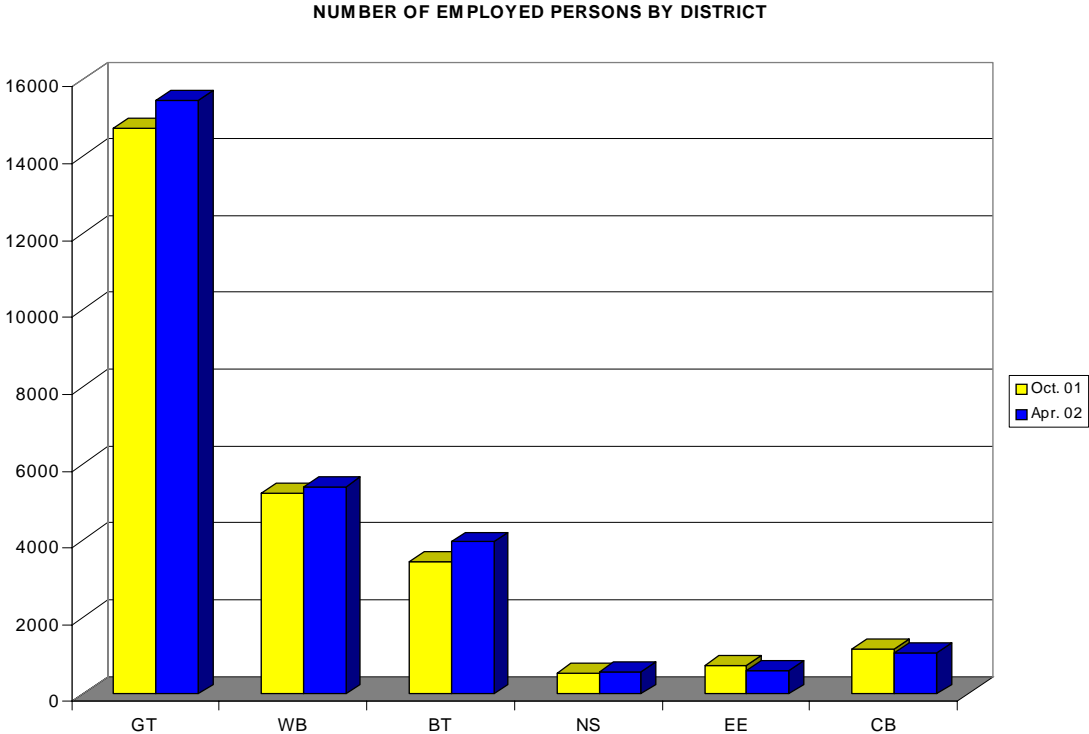
The Labour Force comprises persons 15 years and over, residing in the country, who are employed or actively seeking work during the reference period. It excludes persons attending school full time who were not engaged in part time employment. It also excludes those attending school full time who did not actively seek work during the reference period. A further breakdown of the 28,740 persons revealed the following:

- Females made up the larger portion of the Labour Force accounting for 14,745 persons or 51.3 percent.
- Non-Caymanians totaling 15,627 persons accounted for 54.3 percent of the Labour Force.
- 56.5 percent of the Labour Force resided in George Town, 19.9 percent in West Bay, 14.9 percent in Bodden Town, 2.2 percent in North Side, 2.4 percent in East End and 4.1 percent in Cayman Brac.
- 0.9 percent of the Labour Force or 268 persons were from the 15 – 17 age group, 9.7 percent or 2,793 persons belonged to the 18 – 24 age group. 28.9 percent or 8,302 persons were from the 25 – 34 age group, 32.2 percent or 9,240 persons came from the 35 – 44 age group and 8,136 persons or 28.3 percent were from the 45 and over category.

THE EMPLOYED

- 27,103 persons or 94.3 percent of the Labour Force were employed.
- 13,048 males and 14,055 females were employed.

- 55.9 percent or 15,147 of all persons employed were non-Caymanian.
- 15,461 persons or 57.0 percent of the employed resided in George Town, 5,406 or 19.9 percent in West Bay, 3,959 or 14.6 percent in Bodden Town, 547 or 2.1 percent in North Side, 620 or 2.3 percent in East End and 1,084 or 4.0 percent in Cayman Brac.



- The Wholesale/Retail sector was the largest employer of persons accounting for 3,490 or 12.9 percent of the employed labour force. Hotels and Restaurants employed 3,330 persons or 12.7 percent of the employed labour force. Construction accounted for 3,197 or 11.8 percent, Banking and Insurance employed 3,059 persons or 11.3 percent, the Household sector with 2,819 persons or 10.4 percent and Business Services with 2,451 persons or 9.0 percent were the other major employment generating sectors.

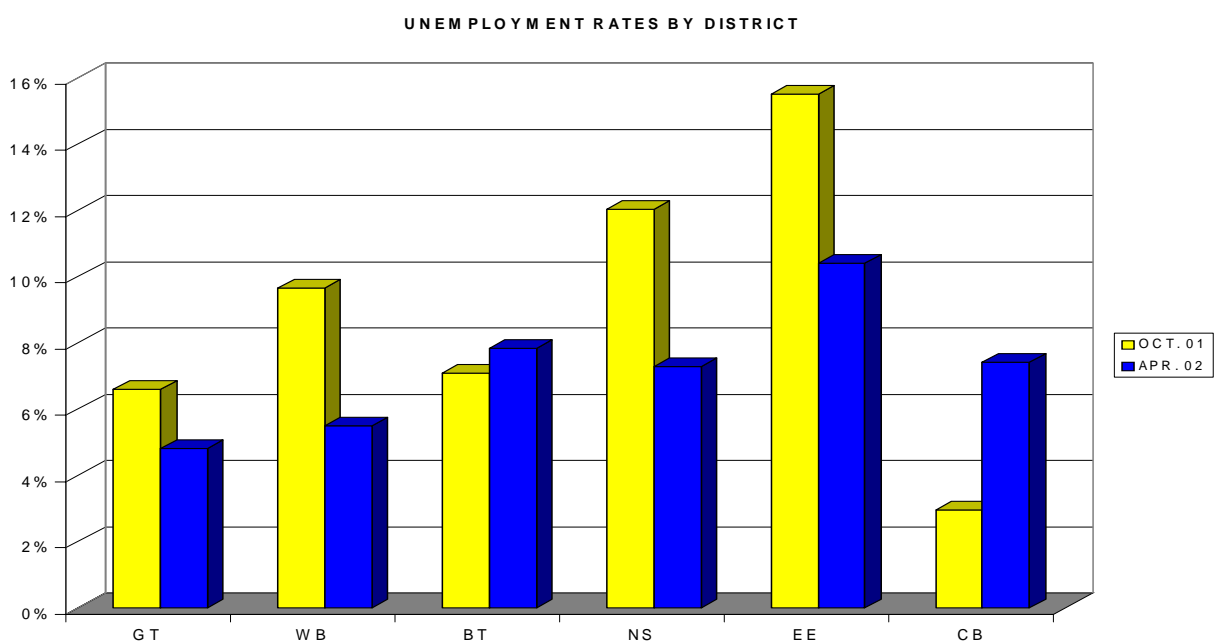
A comparison with the October 2001 Labour Force Survey revealed that:

- The number of persons employed increased from 25,862 in October 2001 to 27,103 in April 2002 or by 4.8 percent.
- The number of persons employed in the Construction, Hotels and Restaurant and Business Services sectors increased. In April 2002 3,798 persons were employed in Construction, 2,934 in Hotels and Restaurants and 2,451 in Business Services. In 2001 the respective figures were 2,976, 2,691 and 2,076.

- The number of workers in the Wholesale/Retail and Banking and Insurance sectors decreased in the period between the October 2001 and the April 2002 Labour Force Survey. The numbers decreased from 3,896 to 3,490 and 3,297 to 3,059 respectively.

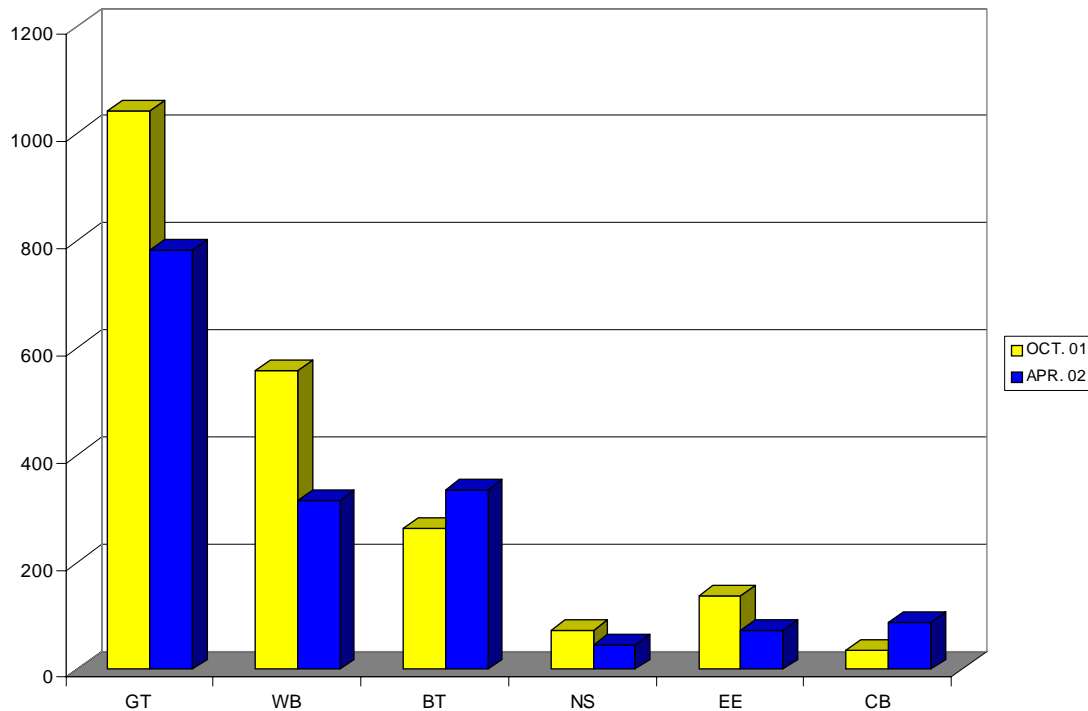
THE UNEMPLOYED

- 1,637 or 5.7 percent of the Labour Force were categorised as being unemployed in April 2002.
- The number of unemployed males was higher than females with 947 males as opposed to 690 females.
- The unemployment rate for males was 6.8 percent and 4.7 percent for females.
- 1,157 Caymanians were recorded as being unemployed as compared with 480 non-Caymanians.
- Unemployment rates for Caymanians and non-Caymanians were 8.8 and 3.1 percent respectively. These compare with 10.0 percent and 5.8 percent for the same categories in October 2001.
- Unemployment rates varied significantly between the districts with East End registering the highest rate and George Town the lowest.
- Only one district registered double digit rates of unemployment in April 2002 as compared with three in October 2001. East End with 72 unemployed persons had the highest unemployment rate of 10.4 percent in April. This rate was however lower than the 15.5 percent registered in October 2001.



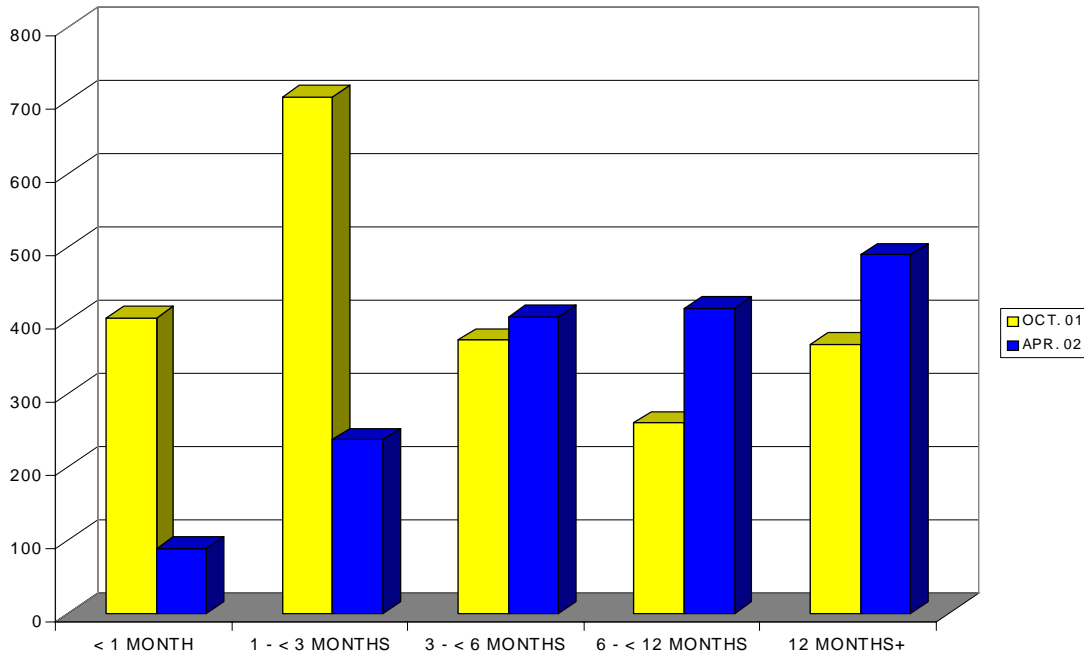
- 783 persons were unemployed in George Town, 315 in West Bay, 336 in Bodden Town, 45 in North Side and 87 in Cayman Brac in April 2002. These translated to unemployment rates of 4.8, 5.5, 7.8, 7.3 and 7.4 percent respectively.
- Bodden Town and Cayman Brac were the only two districts to register increases in the number of unemployed persons and unemployment rates when compared with figures from October 2001.

NUMBER OF UNEMPLOYED PERSONS BY DISTRICT



- The number of first time job seekers who were unsuccessful in obtaining work increased to 4.2 percent of the total number of unemployed in April. 69 persons fell into this category in April, up from the 37 or 1.8 percent registered in October 2001.
- Based on the industry classification of the last job held, the construction, wholesale/retail and hotels/restaurants sectors registered the highest number of unemployed persons in April 2002. 379 unemployed persons had last worked in the construction industry. The figures for wholesale/retail and hotels/restaurants were 337 and 200 respectively.
- 326 persons or a little less than 20 percent of the unemployed had been out of work for less than three months in the April 2002 survey. In contrast 1,108 persons or 52.5 percent of those unemployed in October 2001 had been out of work for less than three months.

NUMBER OF UNEMPLOYED BY LENGTH OF TIME UNEMPLOYED



- 89 persons or 5.4 percent of the unemployed had been out of work for less than one month in April. The corresponding figures for October 2001 were 403 persons or 19.1 percent.
- 5.4 percent of the unemployed (89 persons) were in the 15 – 17 age group, 21.0 percent or 344 persons came from the 18 – 24 age group. 400 persons representing 24.4 percent of the unemployed were between the ages of 25 and 34, 21.5 percent or 352 persons were in the 35 – 44 age group and 27.6 percent or 452 persons were from the 45 and over age group.
- Unemployment rates by age group ranged from 4.8 percent in the 25 – 34 category to 14.1 percent in the 15 – 24 age category. Rates of 12.3, 5.8 and 5.6 percent were observed in the 18 – 24, 35 – 44 and 45 and over categories respectively.
- The unemployment rate for persons 18 years and over in April 2002 was 5.4 percent. In October 2001 the rate was 7.3 percent.

UNDER-EMPLOYMENT

Under-employment is defined using 30 hours a week as a reference point. Persons available to work longer hours but who worked for less than 30 hours due to unavailability of work are considered to be under employed.

- 758 persons or 2.8 percent of the employed work force fell into this category during the April 2002 survey. Of these 305 persons or 40.2 percent actively sought additional work during the reference period. This compares to 1,157 persons or 4.5 percent of the employed work force in the October 2001 Labour Force Survey. 553 persons or 47.8 percent of those available to work in the October survey actively sought additional hours.

POPULATION ESTIMATES

The population of the Cayman Islands excluding Little Cayman, during the week of March 31 – April 6, 2002, was estimated at 42,635 persons, with an error margin of plus or minus 2.5 percent.

The Labour Force Survey uses a systematic random sample of households by district. The sample fractions differ according to district. For the 2002 April Labour Force Survey the following district samples were used.

- | | |
|------------------------------------|------|
| ➤ North Side, East End Cayman Brac | 20% |
| ➤ Bodden Town | 10% |
| ➤ West Bay | 6.7% |
| ➤ George Town | 5% |

Little Cayman is excluded from the Survey.