



THE CAYMAN ISLANDS' LABOUR FORCE SURVEY REPORT SPRING 2006

OCTOBER 2006



THE ECONOMICS AND STATISTICS OFFICE
PORTFOLIO OF FINANCE AND ECONOMICS

CONTENTS

| | |
|--|----|
| 1. Preface | 6 |
| 2. Definitions..... | 8 |
| 3. Methodology..... | 10 |
| 4. Labour Market Overview | 11 |
| 5. Summary of Results..... | 12 |
| 5.1 Population..... | 12 |
| 5.2 Labour Force..... | 14 |
| 5.3 Employed Persons | 15 |
| 5.4 Unemployed Persons | 18 |
| 5.5 Persons Not in the Labour Force | 19 |
| 5.6 General Household Characteristics..... | 19 |

TABLES OF LABOUR FORCE INDICATORS

| | | |
|------------|--|----|
| Table 1A: | Population by Status, Age Group and Sex | 22 |
| Table 1B: | Percentages of Population by Status, Age Group and Sex..... | 23 |
| Table 2: | Population and Labour Force Summary Indicators | 24 |
| Table 3A: | Labour Force by Status, Economic Activity and Sex | 25 |
| Table 3B: | Percentage of Labour Force by Status, Economic Activity and Sex | 25 |
| Table 4: | Labour Force and Participation Rates by Status, Age Groups, and Sex | 26 |
| Table 5A: | Labour Force by Educational Attainment, Status and Sex | 27 |
| Table 5B: | Percentage Distribution of Labour Force by Educational Attainment, Status and Sex | 27 |
| Table 6A: | Employment by Status, Age Groups and Sex | 28 |
| Table 6B: | Percentage Distribution of Employment by Status, Age Groups, and Sex | 28 |
| Table 7A: | Employment Status by Nationality and Sex | 29 |
| Table 7B: | Percentage Distribution of Employment Status by Nationality and Sex | 29 |
| Table 8A: | Employed by Industry, Status and Sex | 30 |
| Table 8B: | Percentage Distribution of Employed by Industry, Status and Sex | 31 |
| Table 9A: | Distribution of Estimated Earnings Per Month of Employed Persons.. .. | 32 |
| Table 9B: | Percentage Distribution of Employed Persons by Earnings ... | 33 |
| Table 10A: | Employed by Occupation Classes and Earnings | 34 |
| Table 10B: | Total Number and Percentage Distribution of Employed by Occupation Class | 35 |
| Table 11: | Part-Time Employees by Status, Age Groups, and Sex | 36 |
| Table 12: | Hours of Work Per Week by Industry | 37 |
| Table 13A: | Unemployment by Status, Age Group and Sex | 38 |
| Table 13B: | Unemployment Rates by Status, Age Group and Sex | 38 |
| Table 14A: | Unemployment by Status, Sex and Length of | |

| | | |
|------------|---|----|
| | Unemployment | 39 |
| Table 14B: | Percentage Distribution of the Unemployed by Length of Unemployment | 39 |
| Table 15A: | Unemployed by Source of Financial Support | 40 |
| Table 15B: | Percentage Distribution by Source of Financial Support | 40 |
| Table 16A: | Not in Labour Force by Status, Age Group and Sex | 41 |
| Table 16B: | Percentages of Not in Labour Force by Status, Age Group and Sex | 41 |
| Table 17A: | Age 15 and Over Not in the Labour Force by Educational Attainment and Status | 42 |
| Table 17B: | Percentage Distribution: Age 15 and Over Not in the Labour Force by Educational Attainment and Status | 42 |

FREQUENCY TABLES

| | | |
|-----------|--|----|
| Table 18: | Not in Labour Force: Main Means of Financial Support..... | 44 |
| Table 19: | Not in the Labour Force: Major Reason for Not Seeking Work | 44 |
| Table 20: | Employed Persons: Reasons for Working Less Than 30 Hrs ... | 44 |
| Table 21: | Number of Persons per Household | 45 |
| Table 22: | Households Having Building Insurance | 45 |
| Table 23: | Households Having Building Content Insurance | 45 |
| Table 24: | Number of Vehicles per Household | 45 |
| Table 25: | Number of Computers per Household | 46 |
| Table 26: | Number of Cellular phones per Household | 46 |
| Table 27: | Number of Fixed Line Telephones per Household | 46 |
| Table 28: | Number of Households Having High-speed Internet | 46 |
| Table 29: | Number of Households Having Cable TV/Satellite | 47 |
| Table 30: | Number of Households Having Dial-up Internet | 47 |
| Table 31: | House Ownership | 47 |
| Table 32: | Type of House | 47 |

| | | |
|-----------|---|----|
| Table 33: | Expenditure on Food and Non-Alcoholic Beverages Per Month | 48 |
| Table 34: | Expenditure on Alcoholic & Tobacco Products Per Month | 48 |
| Table 35: | Expenditure on Housing (Rental, Mortgage, Utilities etc) Per Month | 48 |
| Table 36: | Expenditure on Clothing (Including Shoes) Per Month | 49 |
| Table 37: | Expenditure on Household Supplies Per Month | 49 |
| Table 38: | Expenditure on Travel and Communication Per Month | 49 |
| Table 39: | Expenditure on Education Per Month | 50 |
| Table 40: | Expenditure on Medical Services Per Month | 50 |
| Table 41: | Expenditure on Personal Goods and Services Per Month | 50 |
| Table 42: | Relationship within the Household | 51 |

1. Preface

The Cayman Islands Labour Force Survey (LFS) was designed to measure the characteristics, levels and trends of employment, unemployment and labour force in the Cayman Islands. This survey has been conducted bi-annually since 1992. The reference period for this edition of the LFS was April 23rd – 29th 2006 while the actual survey was conducted during the period April 30th to June 11th 2006.

Planning and execution of the survey was done by the staff of the Economics and Statistics Office (ESO), a department of the Portfolio of Finance and Economics of the Cayman Islands Government. Data collection was done by the staff together with experienced contracted enumerators. The ESO Census and Survey Supervisor supervised the field interviews while data entry and processing were implemented by the ESO staff with technical assistance from Software Computer Solutions.

This LFS Report is more extensive than the LFS Reports produced in recent years as it presents a greater number of data sets in the following areas:

- Labour force: the highest educational attainment of the labour force are presented;
- Employment: the following data sets for employed persons are shown: (a) employment by industry; (b) employment status – whether employed or self employed with employees; (c) estimated earnings per month; (d) hours of work by industry; (e) employment by occupation classes;
- Unemployment: the duration of unemployment is now presented along with the means of financial support;
- Persons not in the labour force: data on characteristics of persons who are of working age but not in the labour force during the reference period are presented in this report: (a) demographic characteristics;

(b) highest educational attainment ; (c) means of financial support; and (d) reasons for not seeking work.

In addition, frequency distribution tables on the socio-economic characteristics of sampled households are also shown, including:

- Household size;
- Physical assets such as house ownership; whether households have building or contents insurance; number of vehicles, computers, cellular phones, cable/satellite and internet; and
- Range of household expenditures including monthly expenditure on food and non-alcoholic beverages, clothing, travel and communication, housing, education and medical care.

2. Definitions

Household

A private household consists of one or more persons living together and sharing at least one of the main daily meals or common housekeeping. In general, therefore, a household will comprise a father, mother and children living together.

Labour Force

The labour force is composed of those members of the non-institutional population (i.e. those not in residential institutions such as general penitentiary, retirement homes) 15 years of age and over, whom during the reference week were employed or unemployed.

Employed

Employed persons are those who, during the reference week, did any work for pay or profit; that is, paid work in the context of an employer - employee relationship, or of self-employment. It also includes unpaid family work where unpaid family work is defined as unpaid work which contributed directly to the operation of a farm, business or professional practice, owned or operated by a related member of the household. Based on guidelines of the International Labour Organization (ILO), work can be for as little as an hour; it excludes domestic housework but includes those temporarily (4 weeks or less) away from their jobs.

Unemployed

Unemployed are those who, during the reference week:

- A) Were without work, had actively looked work in the past four weeks and were available for work.
- B) Had not actively looked for work in the past four weeks but had a new job to start in four weeks or less and were available for work.

Not in the Labour Force

Those persons in the non-institution population (i.e. those not in residential institutions such as general penitentiary, retirement homes) – 15 years of age and

over –who, during the reference week, were neither employed or unemployed for the specific reason that the person did not seek work.

Unemployment Rate

The unemployment rate represents the number of unemployed persons expressed as a percentage of the labour force. The unemployment rate for a particular group (age, status sex, etc.) is the number unemployed in that group expressed as a percentage of the labour force for that group.

Participation Rate

Participation rate is the number of persons in the labour force as a proportion of the working age population.

Employment/Population Ratio

The employment/population ratio represents the number of persons employed expressed as a percentage of the population 15 years of age and over. The employment population ratio for a particular group (age, sex, marital status, etc) is the number employed in that group expressed as a percentage of the population for that group.

Part-time Workers

Those who are employed and usually work less than 30 hours per week. This would include students who were 15 years of age and over who work less than 30 hours per week.

Underemployed

Those who usually work less than 30 hours per week because those are the only hours available and were actively seeking and were available to work additional hours.

Rounding and Suppression

Estimates published are rounded to the nearest five but all derived values (totals, averages, rates, ratios, etc) are calculated from un-rounded figures. Therefore the sum of individual rounded items may not equal the total. As practiced in previous LFS, estimates of 25 or lower have been suppressed as indicated by “...” as they are considered to be too unreliable to be useful.

3. Methodology

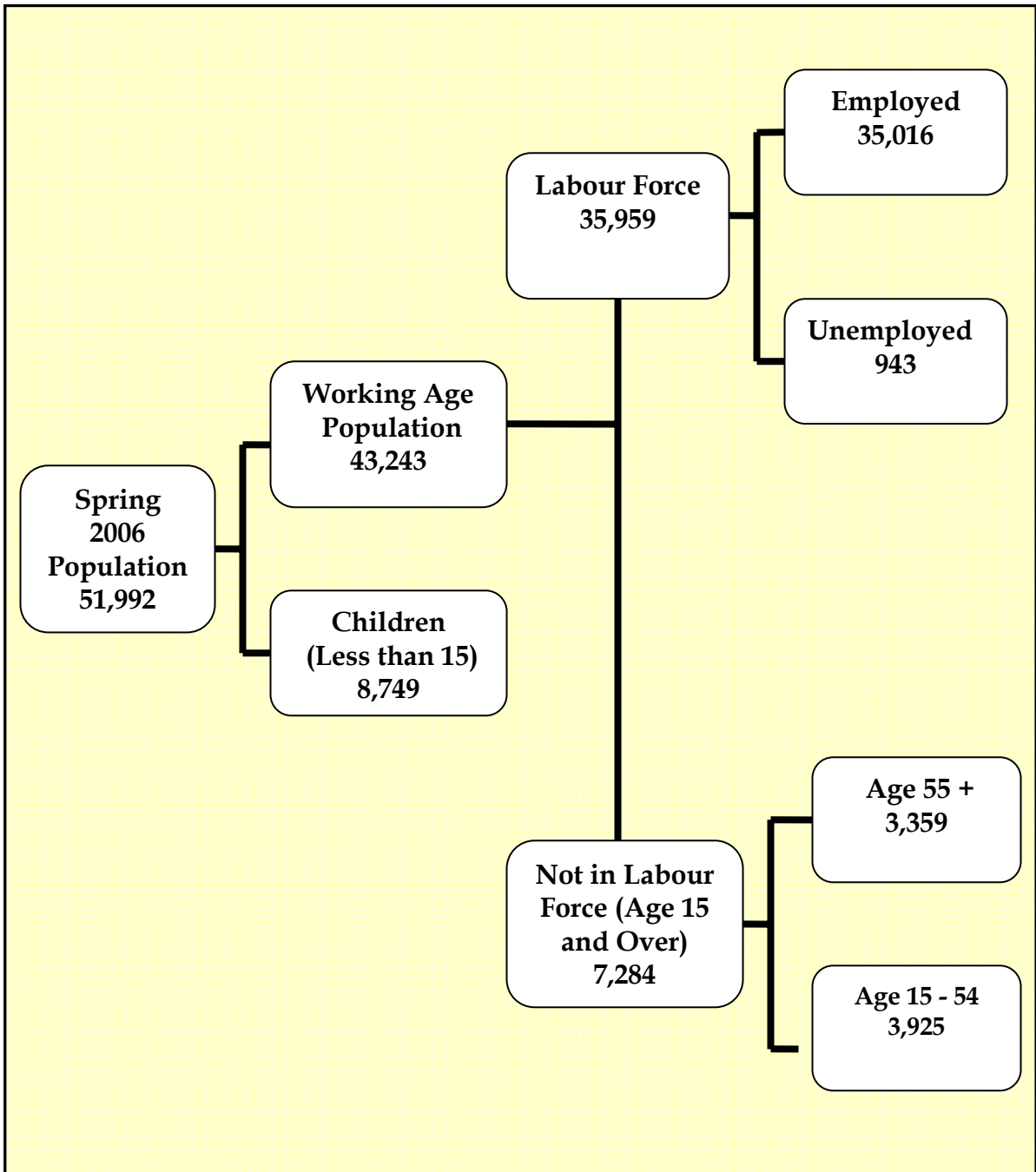
The statistics contained in this report are based on information obtained through a sample survey of households. Personal interviews were carried out with representative households which were drawn at random from the ESO's Household Register. The total number of households in the register was 22,726 as of April 2006. Interviews were conducted during April 30 - June 30th given that the reference week covered the period April 23rd - 29th.

Sampled dwellings declared "out of scope", "vacant" and "unable to find" were not replaced with new households inasmuch as the sampling design already considered such possibilities. The number of households which fully or partially completed the survey was 1,519.

The following tables depict the district distribution of samples by district:

| District | Number of Sampled Households | Actual Samples with Full or Partial Completion |
|--------------|------------------------------------|---|
| George Town | 974 | 852 |
| West Bay | 394 | 339 |
| Bodden Town | 231 | 207 |
| East End | 43 | 34 |
| North Side | 48 | 29 |
| Cayman Brac | 85 | 58 |
| | | |
| Total | 1,775 | 1,519 |

4. Labour Market Overview



5. Summary of Results

The results of this edition of the Labour Force Survey (LFS) are presented in two sets: the first set of tables consist of Tables 1 to 17B, while the second set is comprised of frequency distribution tables.

5.1 Population

The total population of Grand Cayman and Cayman Brac was estimated at 51,992 persons (see Table 1A).

Table 1A also shows that the estimated total number of males during the reference period was 26,340 (or 50.7%) while the total number of females was 25,652 (or 49.3%). Of the total population during the reference week, 60.7 percent (or 31,549) were Caymanians, and 39.3 percent (or 20,443) were Non-Caymanians (Please see Tables 1A and Chart 1).

Chart 1: Population Characteristics

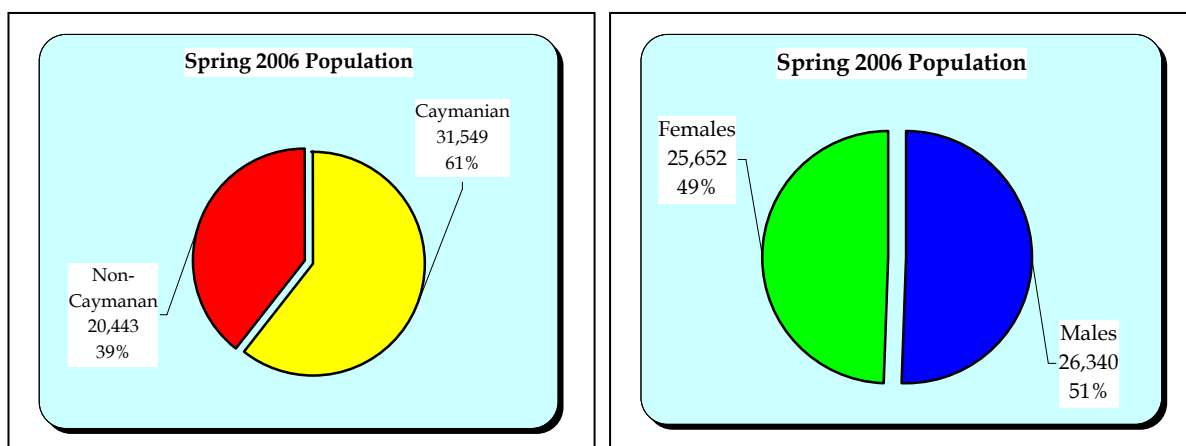
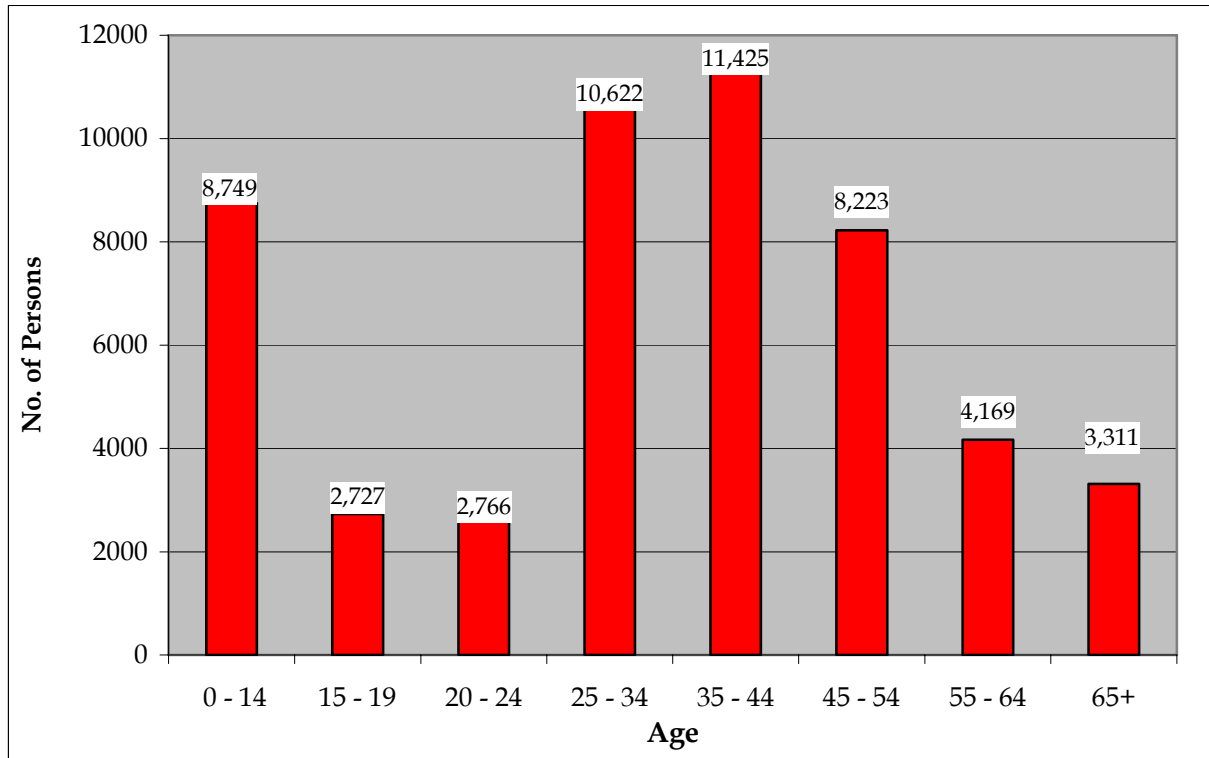


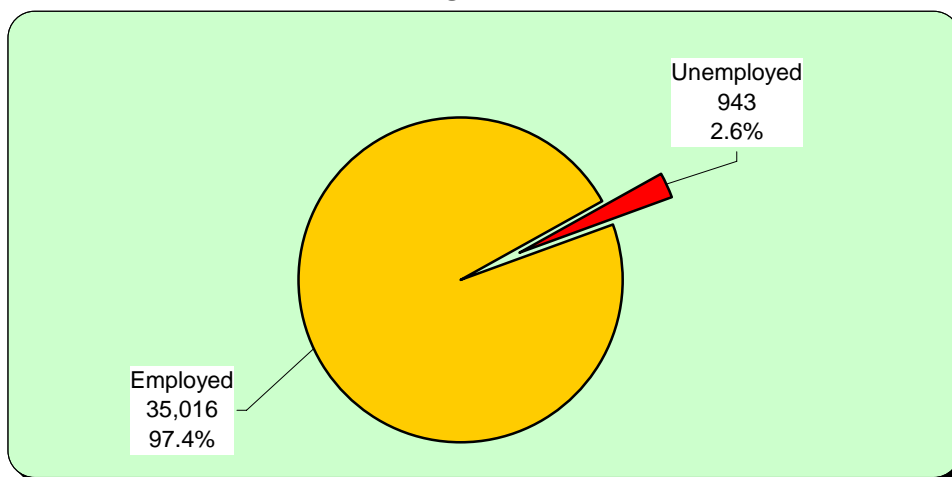
Chart 2: Population age distribution



5.2 Labour Force

Of the total population during the reference week, 35,959 persons were in the labour force (please see Table 2). Of those in the labour force, 35,016 persons (or 97.4%) were employed, while 943 (or 2.6%) were unemployed. (Please see Chart 3).

Chart 3: Spring 2006 Labour Force



In terms of nationality, there were 18,303 Caymanians in the labour force (50.9%), while Non-Caymanians numbered 17,656 persons (49.1%). (Please see Table 3A).

Of all the Caymanians in the labour force, 17,621 (or 96.3%) were employed while 682 persons (or 3.7%) were unemployed. Of all the Non-Caymanians in the labour force, 17,395 (or 98.5%) were employed while 261 (or 1.5%) were unemployed. (Please see Tables 3A and 3B).

Other characteristics of the labour force are as follows:

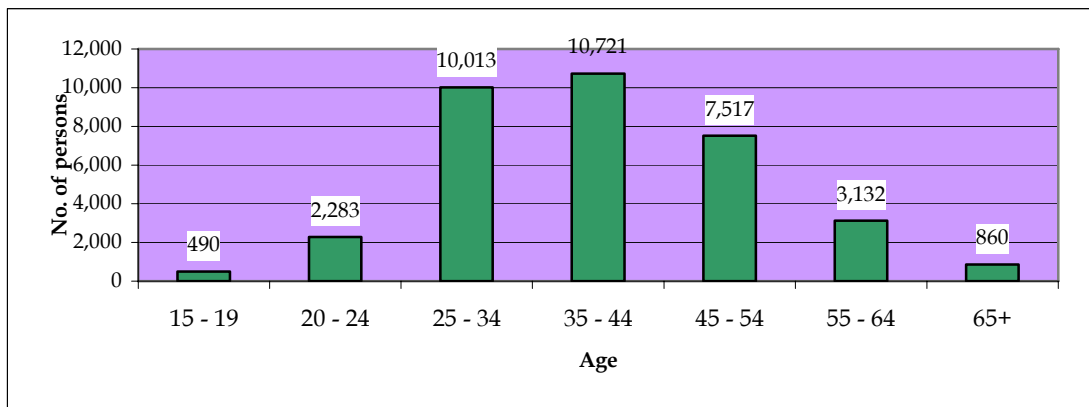
- The overall participation rate (that is, the proportion of the labour force to the total working age population) was 83.2 percent. The overall participation rate of Caymanians was 75.1 percent, while the overall participation rate of Non-Caymanians was 93.5 percent. (Please see Table 4)
- In terms of gender, there were 18,870 (or 52.5 %) males in the labour force while there were 17,089 of females (or 47.5%).
- The top four highest educational attainment of the labour force were high school education (43.2%); diploma (13.2%); primary education (12.5%) and bachelor’s degree (11.6%). (Please see Table 5A and 5B).

5.3 Employed Persons

The key characteristic of the employed persons during the survey period are as follows:

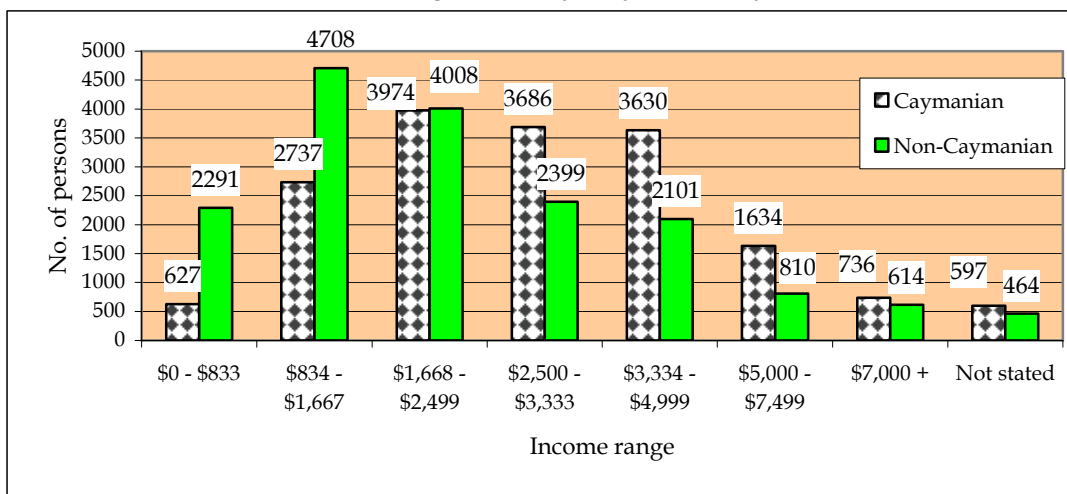
- In terms of gender, 18,408 (or 52.6%) were male and 16,608 (or 47.4%) were female (see Tables 6A and 6B).
- In terms of age, majority of the employed were in the following age brackets: 35-44 years (30.6%), 25-34 years (28.6%) and 45-54 (21.5%).

Chart 4: Employment by Age Group



- Of all the employed persons, 89.8 percent were paid employees and 10.2 percent were self-employed (see Tables 7A and 7B).
- In terms of industry, the top five employers doing the survey were (please see Tables 8A and 8B):
 - Construction - 18.1%
 - Business Services - 12.7%
 - Wholesale and Retail - 12.1%
 - Restaurants and Bars, Hotels and Condominiums - 10.8%
 - Financial Services - 9.2%
- In terms of earnings, a total of 24,430 persons or (69.8%) were earning \$3,333 and below per month while 9,525 persons (or 27.2%) were earning above \$3,333 per month. The proportion of Caymanians earning above \$3,333 per month was 34.1% while the proportion of non-Caymanians earning above \$3,333 per month was estimated at 20.3%. (Please see Tables 9A, 9B and Chart 5)

Chart 5: Earnings of Employed by Nationality.

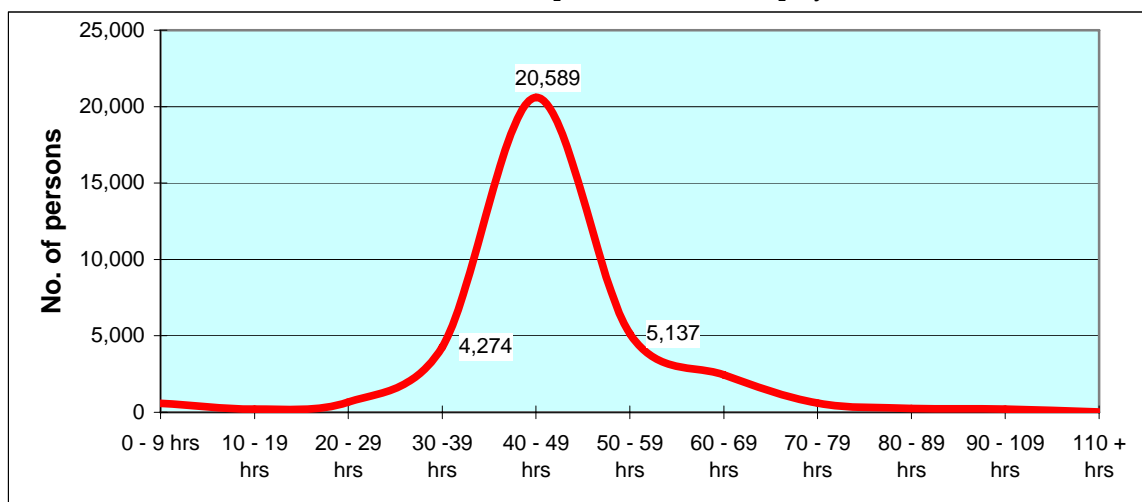


- In terms of occupation classes, the top five classes were (please see Tables 10A and 10B):
 - Professionals, Technicians and Associate Professionals - 23.9%
 - Sales and services elementary occupations - 15.2%
 - Legislators, Senior Officials and Managers - 12.1%
 - Craft and related workers - 12.0%
 - Personal and protective service workers - 11.9%

- Of all the employed persons, 1,477 (or 4.21%) were part-time employees (Table 11).

- Majority of the employed (58.8%) worked 40-49 hrs per week (Table 12 and Chart 6).

Chart 6: Hours Worked per Week for the Employed.

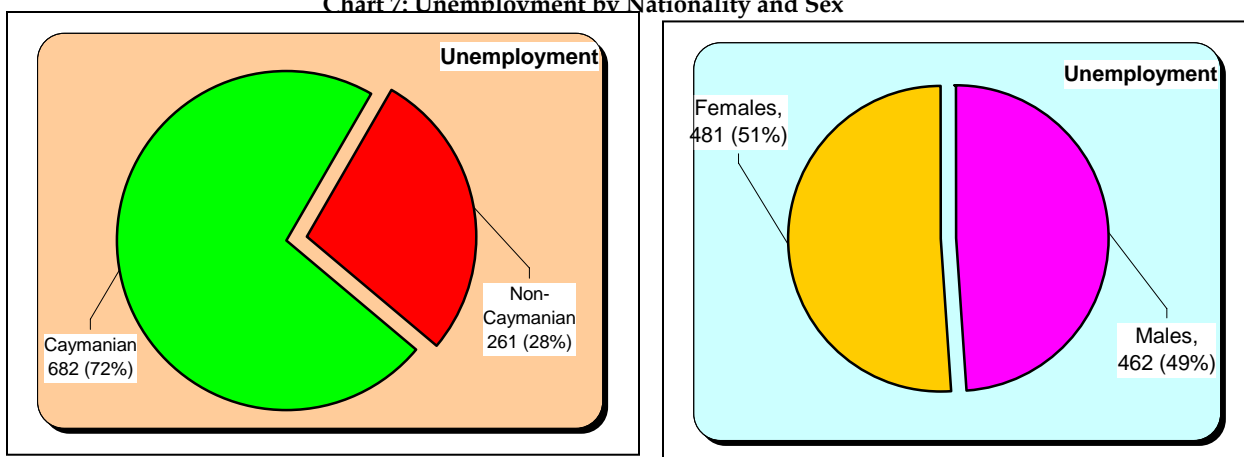


5.4 Unemployed Persons

The estimated number of unemployed during the survey period was 943 (or 2.6% of the labour force).

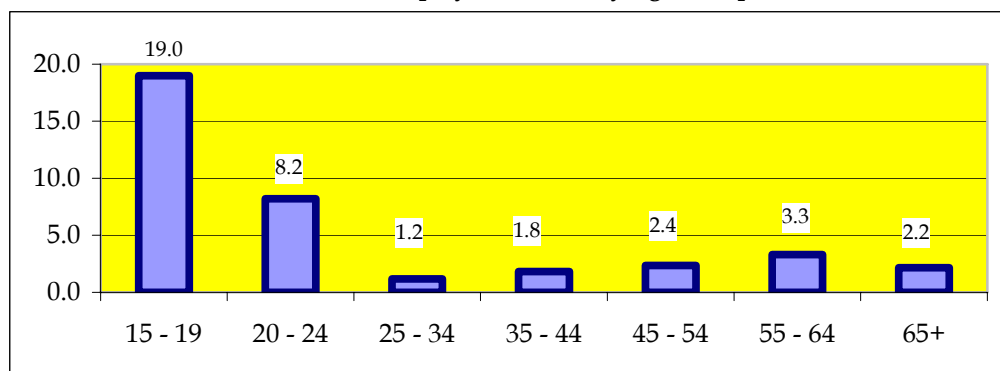
The unemployed persons consisted of 682 Caymanians (72%) and 261 Non-Caymanians (28%) (See Tables 13A and 13B).

Chart 7: Unemployment by Nationality and Sex



In terms of age, the highest unemployment rates were found among the 15-19 years of age (19.0%) and 20-24 years (8.2%).

Chart 8: Unemployment Rates by Age Groups



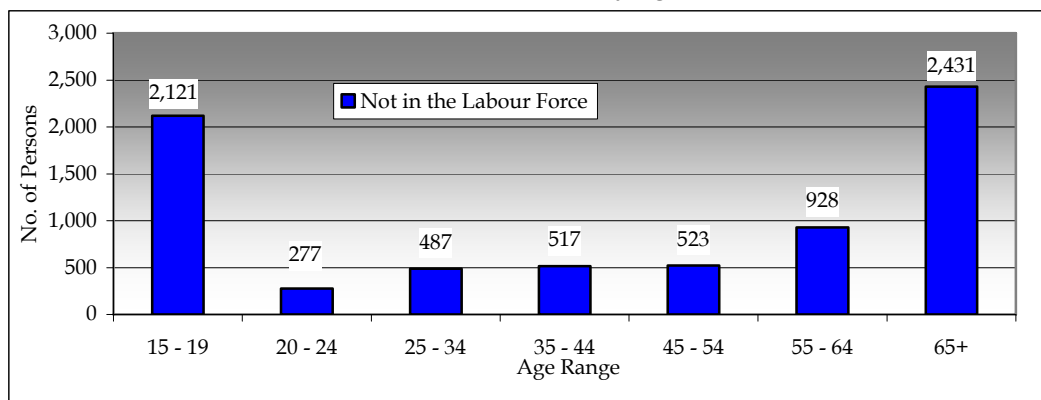
Majority of the unemployed (58.1%) did not have work for at least six months (Table 14A and 14B). The main means of support for the unemployed were their parents (34.1%) or spouse/ partner (33.8%) (Table 15A and 15B).

5.5 Persons Not in the Labour Force

The number of persons estimated to be not in the labour force reached 7,284 (Table 16A and 16B).

- Persons over the age of 55 (retirees) was 3,359 or approximately 46.1 percent of those not in the labour force.
- The number of persons between the ages 15 and 54 was 3,925 of which the majority were between the ages of 15 to 19 (29.1%).

Chart 9: Not in the Labour Force by Age Distribution



- The main means of support of persons not in the labour force were parents (31%) or spouse (20.5%) (Table 18).

5.6 General Household Characteristics

Some highlights of the household characteristics were as follows:

- 75.7% of the sample households had one- three members (Table 21). Note that the average household size was 2.3 persons.
- 53.8% sampled household had building insurance while 36.6% had contents insurance (Tables 22 and 23). A cross-tabulation shows that 35.8% of total households have both building and contents insurance.

- 97.2% had 1-3 vehicles (Table 24).
- 54.8% of households had at least one computer (see Table 25).
- 95.5% of households had at least one cellular phone while 49.8% had at least one fixed line (Tables 26 and 27).
- 75.9% had cable television/satellite (see Table 29).
- 41.8% had access to high speed internet (Table 28), while 7.9% had access to dial- up internet (Table 30).
- 48.4% of households were dwelling in rental apartments, 26.6% owned their dwellings with mortgage, while 20.2% owned without mortgage (see Table 31).

**Tables of Labour Force
Indicators**

Table 1A: Population by Status, Age Group and Sex

| Age groups | Population | Caymanian | Non-Caymanian |
|-------------------|-------------------|------------------|----------------------|
| Total | 51,992 | 31,549 | 20,443 |
| Less than 15 | 8,749 | 7,181 | 1,568 |
| 15 - 19 | 2,727 | 2,377 | 350 |
| 20 - 24 | 2,766 | 1,706 | 1,060 |
| 25 - 34 | 10,622 | 4,315 | 6,307 |
| 35 - 44 | 11,425 | 5,081 | 6,344 |
| 45 - 54 | 8,223 | 4,709 | 3,514 |
| 55 - 64 | 4,169 | 3,102 | 1,067 |
| 65+ | 3,311 | 3,078 | 233 |
| Male | 26,340 | 15,429 | 10,911 |
| Less than 15 | 4,625 | 3,830 | 795 |
| 15 - 19 | 1,494 | 1,337 | 157 |
| 20 - 24 | 1,507 | 941 | 566 |
| 25 - 34 | 5,396 | 1,929 | 3,467 |
| 35 - 44 | 5,687 | 2,333 | 3,354 |
| 45 - 54 | 4,063 | 2,242 | 1,821 |
| 55 - 64 | 2,208 | 1,608 | 600 |
| 65+ | 1,360 | 1,209 | 151 |
| Female | 25,652 | 16,120 | 9,532 |
| Less than 15 | 4,124 | 3,351 | 773 |
| 15 - 19 | 1,233 | 1,040 | 193 |
| 20 - 24 | 1,259 | 765 | 494 |
| 25 - 34 | 5,226 | 2,386 | 2,840 |
| 35 - 44 | 5,738 | 2,748 | 2,990 |
| 45 - 54 | 4,160 | 2,467 | 1,693 |
| 55 - 64 | 1,961 | 1,494 | 467 |
| 65+ | 1,951 | 1,869 | 82 |

Table 1B: Percentages of Population by Status, Age Group and Sex

| Age groups | Population | Caymanian | Non-Caymanian |
|---------------|--------------|--------------|---------------|
| Total | 100.0 | 100.0 | 100.0 |
| Less than 15 | 16.8 | 22.8 | 7.7 |
| 15 - 19 | 5.2 | 7.5 | 1.7 |
| 20 - 24 | 5.3 | 5.4 | 5.2 |
| 25 - 34 | 20.4 | 13.7 | 30.9 |
| 35 - 44 | 22.0 | 16.1 | 31.0 |
| 45 - 54 | 15.8 | 14.9 | 17.2 |
| 55 - 64 | 8.0 | 9.8 | 5.2 |
| 65+ | 6.4 | 9.8 | 1.1 |
| Male | 50.7 | 48.9 | 53.4 |
| Less than 15 | 8.9 | 12.1 | 3.9 |
| 15 - 19 | 2.9 | 4.2 | 0.8 |
| 20 - 24 | 2.9 | 3.0 | 2.8 |
| 25 - 34 | 10.4 | 6.1 | 17.0 |
| 35 - 44 | 10.9 | 7.4 | 16.4 |
| 45 - 54 | 7.8 | 7.1 | 8.9 |
| 55 - 64 | 4.2 | 5.1 | 2.9 |
| 65+ | 2.6 | 3.8 | 0.7 |
| Female | 49.3 | 51.1 | 46.6 |
| Less than 15 | 7.9 | 10.6 | 3.8 |
| 15 - 19 | 2.4 | 3.3 | 0.9 |
| 20 - 24 | 2.4 | 2.4 | 2.4 |
| 25 - 34 | 10.1 | 7.6 | 13.9 |
| 35 - 44 | 11.0 | 8.7 | 14.6 |
| 45 - 54 | 8.0 | 7.8 | 8.3 |
| 55 - 64 | 3.8 | 4.7 | 2.3 |
| 65+ | 3.8 | 5.9 | 0.4 |

Table 2: Population and Labour Force Summary Indicators

| Age groups | Population | Labour Force | Employed | Unemployment | Not in Labour Force |
|---------------|---------------|---------------|---------------|--------------|---------------------|
| Total | 51,992 | 35,959 | 35,016 | 943 | 7,284 |
| Less than 15 | 8,749 | | | | |
| 15 - 19 | 2,727 | 605 | 490 | 115 | 2,121 |
| 20 - 24 | 2,766 | 2,487 | 2,283 | 204 | 277 |
| 25 - 34 | 10,622 | 10,132 | 10,013 | 119 | 487 |
| 35 - 44 | 11,425 | 10,919 | 10,721 | 198 | 517 |
| 45 - 54 | 8,223 | 7,698 | 7,517 | 181 | 523 |
| 55 - 64 | 4,169 | 3,239 | 3,132 | 107 | 928 |
| 65+ | 3,311 | 879 | 860 | ... | 2,431 |
| Male | 26,340 | 18,870 | 18,408 | 462 | 2,840 |
| Less than 15 | 4,625 | | | | |
| 15 - 19 | 1,494 | 417 | 340 | 77 | 1,077 |
| 20 - 24 | 1,507 | 1,385 | 1,260 | 125 | 121 |
| 25 - 34 | 5,396 | 5,212 | 5,143 | 69 | 183 |
| 35 - 44 | 5,687 | 5,566 | 5,514 | 52 | 120 |
| 45 - 54 | 4,063 | 3,931 | 3,829 | 102 | 131 |
| 55 - 64 | 2,208 | 1,845 | 1,808 | 37 | 362 |
| 65+ | 1,360 | 514 | 514 | | 846 |
| Female | 25,652 | 17,089 | 16,608 | 481 | 4,444 |
| Less than 15 | 4,124 | | | | |
| 15 - 19 | 1,233 | 188 | 150 | 38 | 1,044 |
| 20 - 24 | 1,259 | 1,102 | 1,023 | 79 | 156 |
| 25 - 34 | 5,226 | 4,920 | 4,870 | 50 | 304 |
| 35 - 44 | 5,738 | 5,353 | 5,207 | 146 | 397 |
| 45 - 54 | 4,160 | 3,767 | 3,688 | 79 | 392 |
| 55 - 64 | 1,961 | 1,394 | 1,324 | 70 | 566 |
| 65+ | 1,951 | 365 | 346 | ... | 1,585 |

Table 3A: Labour Force by Status, Economic Activity and Sex

| Economic Activity | Total | Caymanian | Non-Caymanian |
|--------------------------|---------------|------------------|----------------------|
| Total | 35,959 | 18,303 | 17,656 |
| Employed | 35,016 | 17,621 | 17,395 |
| Unemployed | 943 | 682 | 261 |
| Male | 18,870 | 9,104 | 9,766 |
| Employed | 18,408 | 8,691 | 9,717 |
| Unemployed | 462 | 413 | 49 |
| Female | 17,089 | 9,199 | 7,890 |
| Employed | 16,608 | 8,930 | 7,678 |
| Unemployed | 481 | 269 | 212 |

Table 3B: Percentage of Labour Force by Status, Economic Activity and Sex

| Economic Activity | Total | Caymanian | Non-Caymanian |
|--------------------------|--------------|------------------|----------------------|
| Total | 100.0 | 100.0 | 100.0 |
| Employed | 97.4 | 96.3 | 98.5 |
| Unemployed | 2.6 | 3.7 | 1.5 |
| Male | 52.5 | 49.7 | 55.3 |
| Employed | 51.2 | 47.5 | 55.0 |
| Unemployed | 1.3 | 2.3 | 0.3 |
| Female | 47.5 | 50.3 | 44.7 |
| Employed | 46.2 | 48.8 | 43.5 |
| Unemployed | 1.3 | 1.5 | 1.2 |

Table 4: Labour Force and Participation Rates by Status, Age Groups, and Sex

| Age groups | Labour Force | | | Participation Rate | | |
|---------------|---------------|---------------|---------------|--------------------|-------------|---------------|
| | Total | Caymanian | Non-Caymanian | Total | Caymanian | Non-Caymanian |
| Total | 35,959 | 18,303 | 17,656 | 83.2 | 75.1 | 93.5 |
| 15 - 19 | 605 | 556 | 49 | 22.2 | 23.4 | 14.0 |
| 20 - 24 | 2,487 | 1,492 | 995 | 89.9 | 87.5 | 93.9 |
| 25 - 34 | 10,132 | 4,085 | 6,047 | 95.4 | 94.7 | 95.9 |
| 35 - 44 | 10,919 | 4,808 | 6,111 | 95.6 | 94.6 | 96.3 |
| 45 - 54 | 7,698 | 4,294 | 3,404 | 93.6 | 91.2 | 96.9 |
| 55 - 64 | 3,239 | 2,313 | 926 | 77.7 | 74.6 | 86.8 |
| 65+ | 879 | 755 | 124 | 26.5 | 24.5 | 53.2 |
| Male | 18,870 | 9,104 | 9,766 | 71.6 | 59.0 | 89.5 |
| 15 - 19 | 417 | 392 | ... | 27.9 | 29.3 | ... |
| 20 - 24 | 1,385 | 832 | 553 | 91.9 | 88.4 | 97.7 |
| 25 - 34 | 5,212 | 1,834 | 3,378 | 96.6 | 95.1 | 97.4 |
| 35 - 44 | 5,566 | 2,213 | 3,353 | 97.9 | 94.9 | 100.0 |
| 45 - 54 | 3,931 | 2,124 | 1,807 | 96.8 | 94.7 | 99.2 |
| 55 - 64 | 1,845 | 1,294 | 551 | 83.6 | 80.5 | 91.8 |
| 65+ | 514 | 415 | 99 | 37.8 | 34.3 | 65.6 |
| Female | 17,089 | 9,199 | 7,890 | 66.6 | 57.1 | 82.8 |
| 15 - 19 | 188 | 164 | ... | 15.2 | 15.8 | ... |
| 20 - 24 | 1,102 | 660 | 442 | 87.5 | 86.3 | 89.5 |
| 25 - 34 | 4,920 | 2,251 | 2,669 | 94.1 | 94.3 | 94.0 |
| 35 - 44 | 5,353 | 2,595 | 2,758 | 93.3 | 94.4 | 92.2 |
| 45 - 54 | 3,767 | 2,170 | 1,597 | 90.6 | 88.0 | 94.3 |
| 55 - 64 | 1,394 | 1,019 | 375 | 71.1 | 68.2 | 80.3 |
| 65+ | 365 | 340 | ... | 18.7 | 18.2 | 30.5 |

Table 5A: Labour Force by Educational Attainment, Status and Sex

| | Total | Caymanian | | | Non-Caymanian | | |
|----------------------------|--------|-----------|-------|--------|---------------|-------|--------|
| | | All | Male | Female | All | Male | Female |
| All Attainment | 35,959 | 18,303 | 9,104 | 9,199 | 17,656 | 9,766 | 7,890 |
| Associate Degree | 2,003 | 1,185 | 497 | 688 | 818 | 377 | 441 |
| Bachelors Degree | 4,176 | 1,915 | 792 | 1,123 | 2,261 | 1,299 | 962 |
| Graduate Degree | 1,640 | 783 | 348 | 435 | 857 | 435 | 422 |
| Complete high | 15,548 | 8,916 | 4,406 | 4,510 | 6,632 | 3,326 | 3,306 |
| Incomplete high but | | | | | | | |
| Complete Primary | 4,506 | 1,722 | 941 | 781 | 2,784 | 1,674 | 1,110 |
| Incomplete Primary | 114 | 102 | 64 | 38 | ... | ... | 0 |
| Professional Qualification | 2,176 | 874 | 474 | 400 | 1,302 | 854 | 448 |
| Vocational or Technical | | | | | | | |
| Diploma | 4,732 | 2,091 | 1,137 | 954 | 2,641 | 1,695 | 946 |
| Other | 68 | 31 | 31 | 0 | 37 | 0 | 37 |
| Not Classified/ Not Stated | 996 | 684 | 414 | 270 | 312 | 94 | 218 |

Table 5B: Percentage Distribution of Labour Force by Educational Attainment, Status and Sex

| | Total | Caymanian | | | Non-Caymanian | | |
|----------------------------|-------|-----------|------|--------|---------------|------|--------|
| | | All | Male | Female | All | Male | Female |
| All Attainment | 100 | 100 | 100 | 100 | 100 | 100 | 100 |
| Associate Degree | 5.6 | 6.5 | 5.5 | 7.5 | 4.6 | 3.9 | 5.6 |
| Bachelors Degree | 11.6 | 10.5 | 8.7 | 12.2 | 12.8 | 13.3 | 12.2 |
| Graduate Degree | 4.6 | 4.3 | 3.8 | 4.7 | 4.9 | 4.5 | 5.4 |
| Complete high | 43.2 | 48.7 | 48.4 | 49.0 | 37.6 | 34.0 | 41.9 |
| Incomplete high but | | | | | | | |
| Complete Primary | 12.5 | 9.4 | 10.3 | 8.5 | 15.8 | 17.1 | 14.1 |
| Incomplete Primary | 0.3 | 0.6 | 0.7 | 0.4 | 0.1 | 0.1 | 0.0 |
| Professional Qualification | 6.1 | 4.8 | 5.2 | 4.3 | 7.4 | 8.7 | 5.7 |
| Vocational or Technical | | | | | | | |
| Diploma | 13.2 | 11.4 | 12.5 | 10.4 | 15.0 | 17.3 | 12.0 |
| Other | 0.2 | 0.2 | 0.3 | 0.0 | 0.2 | 0.0 | 0.5 |
| Not Classified | 2.8 | 3.7 | 4.5 | 2.9 | 1.8 | 1.0 | 2.7 |

Table 6A: Employment by Status, Age Groups, and Sex

| | Total | Caymanian | | | Non- Caymanian | | |
|--------------|---------------|---------------|--------------|--------------|----------------|--------------|--------------|
| | | All | Male | Female | All | Male | Female |
| Total | 35,016 | 17,621 | 8,691 | 8,930 | 17,395 | 9,717 | 7,678 |
| 15 - 19 | 490 | 441 | 315 | 126 | 49 | ... | ... |
| 20 - 24 | 2,283 | 1,340 | 720 | 620 | 943 | 540 | 403 |
| 25 - 34 | 10,013 | 4,003 | 1,777 | 2,226 | 6,010 | 3,366 | 2,644 |
| 35 - 44 | 10,721 | 4,705 | 2,161 | 2,544 | 6,016 | 3,353 | 2,663 |
| 45 - 54 | 7,517 | 4,178 | 2,034 | 2,144 | 3,339 | 1,795 | 1,544 |
| 55 - 64 | 3,132 | 2,218 | 1,269 | 949 | 914 | 539 | 375 |
| 65+ | 860 | 736 | 415 | 321 | 124 | 99 | ... |

Table 6B: Percentage Distribution of Employment by Status, Age Groups, and Sex

| | Total | Caymanian | | | Non- Caymanian | | |
|--------------|------------|------------|------------|------------|----------------|------------|------------|
| | | All | Male | Female | All | Male | Female |
| Total | 100 | 100 | 100 | 100 | 100 | 100 | 100 |
| 15 - 19 | 1.4 | 2.5 | 3.6 | 1.4 | 0.3 | ... | ... |
| 20 - 24 | 6.5 | 7.6 | 8.3 | 6.9 | 5.4 | 5.6 | 5.2 |
| 25 - 34 | 28.6 | 22.7 | 20.4 | 24.9 | 34.6 | 34.6 | 34.4 |
| 35 - 44 | 30.6 | 26.7 | 24.9 | 28.5 | 34.6 | 34.5 | 34.7 |
| 45 - 54 | 21.5 | 23.7 | 23.4 | 24.0 | 19.2 | 18.5 | 20.1 |
| 55 - 64 | 8.9 | 12.6 | 14.6 | 10.6 | 5.3 | 5.5 | 4.9 |
| 65+ | 2.5 | 4.2 | 4.8 | 3.6 | 0.7 | 1.0 | ... |

Table 7A: Employment Status by Nationality and Sex

| | Total | Caymanian | | | Non- Caymanian | | |
|------------------------------|---------------|---------------|--------------|--------------|----------------|--------------|--------------|
| | | All | Male | Female | All | Male | Female |
| Total | 35,016 | 17,621 | 8,691 | 8,930 | 17,395 | 9,717 | 7,678 |
| Employees | 31,433 | 14,528 | 6,567 | 7,961 | 16,905 | 9,346 | 7,559 |
| Self-Employed with Employees | 3,583 | 3,093 | 2,124 | 969 | 490 | 371 | 119 |

Table 7B: Percentage Distribution of Employment Status by Nationality and Sex

| | Total | Caymanian | | | Non- Caymanian | | |
|------------------------------|--------------|--------------|--------------|--------------|----------------|--------------|--------------|
| | | All | Male | Female | All | Male | Female |
| Total | 100.0 | 100.0 | 100.0 | 100.0 | 100.0 | 100.0 | 100.0 |
| Employee | 89.8 | 82.4 | 75.6 | 89.1 | 97.2 | 96.2 | 98.5 |
| Self-Employed with Employees | 10.2 | 17.6 | 24.4 | 10.9 | 2.8 | 3.8 | 1.5 |

Table 8A: Employed by Industry, Status, and Sex

| | Total | Caymanian | | | Non-Caymanian | | |
|---|---------------|---------------|--------------|--------------|---------------|--------------|--------------|
| | | All | Male | Female | All | Male | Female |
| Industry Total | 35,016 | 17,621 | 8,691 | 8,930 | 17,395 | 9,717 | 7,678 |
| Agriculture and Fishing | 805 | 426 | 324 | 102 | 379 | 321 | 58 |
| Electricity, Water and Quarrying | 726 | 481 | 399 | 82 | 245 | 245 | ... |
| Construction | 6,344 | 2,336 | 2,130 | 206 | 4,008 | 3,864 | 144 |
| Wholesale and Retail | 4,232 | 2,346 | 1,114 | 1,232 | 1,886 | 1,168 | 718 |
| Restaurant and Bars, Hotels and Condominiums | 3,779 | 1,366 | 468 | 898 | 2,413 | 1,130 | 1,283 |
| Financial Services (Banks & Trust, Insurance, Others) | 3,205 | 2,608 | 696 | 1,912 | 597 | 260 | 337 |
| Business Services | 4,443 | 2,220 | 928 | 1,292 | 2,223 | 1,193 | 1,030 |
| Education, Health and Social Work | 2,421 | 1,225 | 268 | 957 | 1,196 | 303 | 893 |
| Other Community, Social or Personal | 1,817 | 853 | 569 | 284 | 964 | 519 | 445 |
| Public Administration | 2,380 | 2,042 | 957 | 1,085 | 338 | 206 | 132 |
| Private Households with Employees | 3,004 | 342 | 64 | 278 | 2,662 | 197 | 2,465 |
| Transportation, Post and Telecommunication | 1,477 | 1,265 | 712 | 553 | 212 | 151 | 61 |
| Manufacturing (including Printing and Pub.) | 383 | 111 | 62 | 49 | 272 | 160 | 112 |

Table 8B: Percentage Employed by Industry, Status, and Sex

| | Total | Caymanian | | | Non-Caymanian | | |
|---|--------------|--------------|--------------|--------------|---------------|--------------|--------------|
| | | All | Male | Female | All | Male | Female |
| Industry Total | 100.0 | 100.0 | 100.0 | 100.0 | 100.0 | 100.0 | 100.0 |
| Agriculture and Fishing | 2.3 | 2.4 | 3.7 | 1.1 | 2.2 | 3.3 | 0.8 |
| Electricity, Water and Quarrying | 2.1 | 2.7 | 4.6 | 0.9 | 1.4 | 2.5 | 0.0 |
| Construction | 18.1 | 13.3 | 24.5 | 2.3 | 23.0 | 39.8 | 1.9 |
| Wholesale and Retail | 12.1 | 13.3 | 12.8 | 13.8 | 10.8 | 12.0 | 9.4 |
| Restaurant and Bars, Hotels and Condominiums | 10.8 | 7.8 | 5.4 | 10.1 | 13.9 | 11.6 | 16.7 |
| Financial Services (Banks & Trust, Insurance, Others) | 9.2 | 14.8 | 8.0 | 21.4 | 3.4 | 2.7 | 4.4 |
| Business Services | 12.7 | 12.6 | 10.7 | 14.5 | 12.8 | 12.3 | 13.4 |
| Education, Health and Social Work | 6.9 | 7.0 | 3.1 | 10.7 | 6.9 | 3.1 | 11.6 |
| Other Community, Social or Personal | 5.2 | 4.8 | 6.5 | 3.2 | 5.5 | 5.3 | 5.8 |
| Public Administration | 6.8 | 11.6 | 11.0 | 12.2 | 1.9 | 2.1 | 1.7 |
| Private Households with Employees | 8.6 | 1.9 | 0.7 | 3.1 | 15.3 | 2.0 | 32.1 |
| Transportation, Post and Telecommunication | 4.2 | 7.2 | 8.2 | 6.2 | 1.2 | 1.6 | 0.8 |
| Manufacturing (including Printing and Pub.) | 1.1 | 0.6 | 0.7 | 0.5 | 1.6 | 1.6 | 1.5 |

**Table 9A: Distribution of Estimated Earnings Per Month of
Employed Persons**

| | Total | Caymanian | Non- Caymanian |
|-------------------|---------------|------------------|---------------------------|
| Total | 35,016 | 17,621 | 17,395 |
| \$0 - \$833 | 2,918 | 627 | 2,291 |
| \$834 - \$1,667 | 7,445 | 2,737 | 4,708 |
| \$1,668 - \$2,499 | 7,982 | 3,974 | 4,008 |
| \$2,500 - \$3,333 | 6,085 | 3,686 | 2,399 |
| \$3,334 - \$4,999 | 5,731 | 3,630 | 2,101 |
| \$5,000 - \$7,499 | 2,444 | 1,634 | 810 |
| \$7,500 + | 1,350 | 736 | 614 |
| Not stated | 1,061 | 597 | 464 |
| | | | |
| Male | 18,408 | 8,691 | 9,717 |
| \$0 - \$833 | 473 | 286 | 187 |
| \$834 - \$1,667 | 3,754 | 1,162 | 2,592 |
| \$1,668 - \$2,499 | 4,977 | 2,038 | 2,939 |
| \$2,500 - \$3,333 | 3,330 | 1,854 | 1,476 |
| \$3,334 - \$4,999 | 2,742 | 1,588 | 1,154 |
| \$5,000 - \$7,499 | 1,507 | 945 | 562 |
| \$7,500 + | 1,095 | 543 | 552 |
| Not stated | 530 | 275 | 255 |
| | | | |
| Female | 16,608 | 8,930 | 7,678 |
| \$0 - \$833 | 2,445 | 341 | 2,104 |
| \$834 - \$1,667 | 3,691 | 1,575 | 2,116 |
| \$1,668 - \$2,499 | 3,005 | 1,936 | 1,069 |
| \$2,500 - \$3,333 | 2,755 | 1,832 | 923 |
| \$3,334 - \$4,999 | 2,989 | 2,042 | 947 |
| \$5,000 - \$7,499 | 937 | 689 | 248 |
| \$7,500 + | 255 | 193 | 62 |
| Not stated | 531 | 322 | 209 |

Table 9B: Percentage Distribution of Employed Persons by Earnings

| | Total | Caymanian | Non-Caymanian |
|-------------------|---------------------------|--------------|---------------|
| | % | % | % |
| Total | 100.0 | 100.0 | 100.0 |
| \$0 - \$833 | 8.3 | 3.6 | 13.2 |
| \$834 - \$1,667 | 21.3 | 15.5 | 27.1 |
| \$1,668 - \$2,499 | 22.8 | 22.6 | 23.0 |
| \$2,500 - \$3,333 | 17.4 | 20.9 | 13.8 |
| \$3,334 - \$4,999 | 16.4 | 20.6 | 12.1 |
| \$5,000 - \$7,499 | 7.0 | 9.3 | 4.7 |
| \$7,500 + | 3.9 | 4.2 | 3.5 |
| Not stated | 3.0 | 3.4 | 2.7 |
| | Percentage of Males (%) | | |
| Male | 100.0 | 100.0 | 100.0 |
| \$0 - \$833 | 2.6 | 3.3 | 1.9 |
| \$834 - \$1,667 | 20.4 | 13.4 | 26.7 |
| \$1,668 - \$2,499 | 27.0 | 23.4 | 30.2 |
| \$2,500 - \$3,333 | 18.1 | 21.3 | 15.2 |
| \$3,334 - \$4,999 | 14.9 | 18.3 | 11.9 |
| \$5,000 - \$7,499 | 8.2 | 10.9 | 5.8 |
| \$7,500 + | 5.9 | 6.2 | 5.7 |
| Not stated | 2.9 | 3.2 | 2.6 |
| | Percentage of Females (%) | | |
| Female | 100.0 | 100.0 | 100.0 |
| \$0 - \$833 | 14.7 | 3.8 | 27.4 |
| \$834 - \$1,667 | 22.2 | 17.6 | 27.6 |
| \$1,668 - \$2,499 | 18.1 | 21.7 | 13.9 |
| \$2,500 - \$3,333 | 16.6 | 20.5 | 12.0 |
| \$3,334 - \$4,999 | 18.0 | 22.9 | 12.3 |
| \$5,000 - \$7,499 | 5.6 | 7.7 | 3.2 |
| \$7,500 + | 1.5 | 2.2 | 0.8 |
| Not stated | 3.2 | 3.6 | 2.7 |

Table 10A: Employed by Occupation Classes and Earnings

| | Total | \$0 - \$833 | \$834 - \$1,667 | \$1,668 - \$2,499 | \$2,500 - \$3,333 | \$3,334 - \$4,999 | \$5,000 - \$7,499 | \$7,500 + | Not stated |
|---|---------------|--------------------|------------------------|--------------------------|--------------------------|--------------------------|--------------------------|------------------|-------------------|
| Legislators, Senior Officials and Managers | 4,240 | ... | 52 | 377 | 720 | 1,138 | 1,076 | 602 | 250 |
| Professionals, Technicians and Associate Professionals | 8,363 | 36 | 500 | 798 | 1,763 | 3,086 | 1,159 | 699 | 308 |
| Office Clerks | 2,908 | 65 | 480 | 939 | 924 | 358 | ... | ... | 117 |
| Customer Service Clerks | 1,622 | 63 | 530 | 654 | 243 | 83 | ... | ... | 37 |
| Personal and Protective Services Workers | 4,169 | 547 | 1,356 | 978 | 822 | 377 | ... | ... | 74 |
| Models, Salespersons and Demonstrators | 963 | 76 | 415 | 276 | 121 | ... | ... | ... | 38 |
| Agricultural and Fishery Workers | 692 | 63 | 369 | 223 | 37 | ... | ... | ... | ... |
| Craft and Related Workers | 4,198 | 151 | 888 | 1,754 | 818 | 357 | 107 | 11 | 112 |
| Plant and Machine Operators and Assemblers | 2,524 | 76 | 590 | 1,008 | 464 | 271 | 38 | 26 | 51 |
| Sales and Service Elementary Occupations | 5,337 | 1,816 | 2,265 | 961 | 173 | 36 | ... | ... | 74 |
| Total | 35,016 | 2,918 | 7,445 | 7,982 | 6,085 | 5,731 | 2,444 | 1,350 | 1,061 |
| Distribution (%) | 100.0 | 8.3 | 21.3 | 22.8 | 17.4 | 16.4 | 7.0 | 3.9 | 3.0 |

**Table 10B: Total Number and Percentage Distribution of
Employed by Occupation Class**

| Occupations | Total | Percentage |
|---|---------------|-------------------|
| Legislators, Senior Officials and Managers | 4,240 | 12.1 |
| Professionals, Technicians and Associate Professionals | 8,363 | 23.9 |
| Office Clerks | 2,908 | 8.3 |
| Customer Service Clerks | 1,622 | 4.6 |
| Personal and Protective Services Workers | 4,169 | 11.9 |
| Models, Salespersons and Demonstrators | 963 | 2.8 |
| Agricultural and Fishery Workers | 692 | 2.0 |
| Craft and Related Workers | 4,198 | 12.0 |
| Plant and Machine Operators and Assemblers | 2,524 | 7.2 |
| Sales and Service Elementary Occupations | 5,337 | 15.2 |
| Total | 35,016 | 100.0 |

Table 11: Part-Time Employees by Status, Age Groups, and Sex

| | Total | Caymanian | | | Non- Caymanian | | |
|--------------|--------------|------------|------------|------------|----------------|------------|------------|
| | | All | Male | Female | All | Male | Female |
| Total | 1,477 | 986 | 462 | 524 | 491 | 235 | 256 |
| 15 - 19 | 77 | 77 | 65 | ... | | | |
| 20 - 24 | 166 | 128 | 78 | 50 | 38 | 25 | ... |
| 25 - 34 | 316 | 166 | 64 | 102 | 150 | 86 | 64 |
| 35 - 44 | 409 | 216 | 83 | 133 | 193 | 75 | 118 |
| 45 - 54 | 188 | 139 | ... | 127 | 49 | ... | 37 |
| 55 - 64 | 208 | 171 | 96 | 75 | 37 | 25 | ... |
| 65+ | 113 | 89 | 64 | 25 | ... | ... | ... |

Table 12: Hours of Work Per Week by Industry

| | 1 - 9 hrs | 10 - 19 hrs | 20 - 29 hrs | 30 -39 hrs | 40 - 49 hrs | 50 - 59 hrs | 60 - 69 hrs | 70 - 79 hrs | 80 - 89 hrs | 90 - 109 hrs | 110 + hrs |
|--|------------|-------------|-------------|--------------|---------------|--------------|--------------|-------------|-------------|--------------|------------|
| Agriculture and Fishing | | ... | ... | 57 | 579 | 102 | ... | | | | |
| Electricity, Water and Quarrying | | | | 75 | 429 | 162 | ... | ... | | | ... |
| Construction | 125 | ... | 105 | 373 | 3749 | 1219 | 584 | 64 | 62 | | 31 |
| Wholesale and Retail | 76 | | 62 | 390 | 2527 | 785 | 286 | 62 | 32 | | ... |
| Restaurant and Bars, Hotels and Condominiums | 31 | ... | 74 | 428 | 2193 | 531 | 250 | 174 | 37 | | 45 |
| Financial Services (banks & trust, insurance, other) | 26 | ... | 62 | 605 | 2009 | 307 | 144 | ... | ... | | ... |
| Business Services | 75 | 50 | 62 | 617 | 2150 | 920 | 419 | 86 | 38 | | ... |
| Education, Health and Social Work | ... | | 43 | 455 | 1535 | 256 | 119 | | | | |
| Other Community, Social or Personal | 63 | 45 | 50 | 279 | 904 | 201 | 200 | 64 | ... | | |
| Public Administration | 57 | | 32 | 572 | 1408 | 149 | 112 | ... | ... | | ... |
| Private Households with employees | 75 | | 101 | 185 | 2119 | 247 | 151 | 51 | 38 | | 38 |
| Transportation, Post and Telecommunication | 38 | 62 | 63 | 152 | 777 | 208 | 102 | 37 | ... | | ... |
| Manufacturing (including Printing and Pub.) | | | | 86 | 210 | 50 | 37 | | | | |
| Total | 579 | 219 | 679 | 4,274 | 20,589 | 5,137 | 2,454 | 601 | 258 | 213 | 13 |
| Distribution (%) | 1.7 | 0.6 | 1.9 | 12.2 | 58.8 | 14.7 | 7.0 | 1.7 | 0.7 | 0.6 | 0.0 |

Table 13A: Unemployment by Status, Age Group and Sex

| | Total | Caymanian | | | Non-Caymanian | | |
|--------------|------------|------------|------------|------------|---------------|-----------|------------|
| | | All | Male | Female | All | Male | Female |
| Total | 943 | 682 | 413 | 269 | 261 | 49 | 212 |
| 15 - 19 | 115 | 115 | 77 | 38 | | | |
| 20 - 24 | 204 | 152 | 112 | 40 | 52 | ... | 39 |
| 25 - 34 | 119 | 82 | 57 | ... | 37 | ... | ... |
| 35 - 44 | 198 | 103 | 52 | 51 | 95 | | 95 |
| 45 - 54 | 181 | 116 | 90 | 26 | 65 | ... | 53 |
| 55 - 64 | 107 | 95 | ... | 70 | ... | ... | |
| 65+ | ... | ... | | ... | | | |

Table 13B: Unemployment Rates by Status, Age Group and Sex

| | Total | Caymanian | | | Non-Caymanian | | |
|--------------|------------|------------|------------|------------|---------------|------------|------------|
| | | All | Male | Female | All | Male | Female |
| Total | 2.6 | 3.7 | 4.5 | 2.9 | 1.5 | 0.5 | 2.7 |
| 15 - 19 | 19.0 | 20.7 | 19.6 | 23.2 | | | |
| 20 - 24 | 8.2 | 10.2 | 13.5 | 6.1 | 5.2 | 2.3 | 8.8 |
| 25 - 34 | 1.2 | 2.0 | 3.1 | ... | 0.6 | 0.4 | ... |
| 35 - 44 | 1.8 | 2.1 | 2.3 | 2.0 | 1.6 | | 3.5 |
| 45 - 54 | 2.4 | 2.7 | 4.2 | 1.2 | 1.9 | 0.7 | 3.3 |
| 55 - 64 | 3.3 | 4.1 | ... | 6.9 | 1.3 | 2.2 | ... |
| 65+ | 2.2 | 2.5 | | 5.6 | | | |

Table 14A: Unemployment by Status, Sex and Length of Unemployment

| | Total | Caymanian | | | Non- Caymanian | | |
|-------------------|------------|------------|------------|------------|----------------|-----------|------------|
| | | All | Male | Female | All | Male | Female |
| Total | 943 | 682 | 413 | 269 | 261 | 49 | 212 |
| Less than 1 month | 109 | 51 | 26 | ... | 58 | ... | 58 |
| 1 - 3 months | 133 | 108 | 83 | ... | ... | ... | ... |
| 3 - 6 months | 125 | 100 | 59 | 41 | ... | ... | ... |
| 6 - 12 months | 193 | 156 | 111 | 45 | 37 | ... | ... |
| 12 + months | 359 | 255 | 134 | 121 | 104 | ... | 92 |
| Not Stated | 24 | ... | ... | ... | ... | ... | ... |

Table 14B: Percentage Distribution of the Unemployed by Length of Unemployment

| | Total | Caymanian | | | Non- Caymanian | | |
|-------------------|-------|-----------|-------|--------|----------------|-------|--------|
| | | All | Male | Female | All | Male | Female |
| Total | 100.0 | 100.0 | 100.0 | 100.0 | 100.0 | 100.0 | 100.0 |
| Less than 1 month | 11.6 | 7.5 | 6.3 | ... | 22.2 | 0.0 | 27.4 |
| 1 - 3 months | 14.1 | 15.8 | 20.1 | ... | ... | 24.5 | ... |
| 3 - 6 months | 13.3 | 14.7 | 14.3 | 15.2 | ... | 0.0 | 11.8 |
| 6 - 12 months | 20.5 | 22.9 | 26.9 | 16.7 | 14.2 | 51.0 | ... |
| 12 + months | 38.1 | 37.4 | 32.4 | 45.0 | 39.8 | 24.5 | 43.4 |
| Not Stated | 2.5 | ... | ... | ... | ... | ... | ... |

Table 15A: Unemployed by Source of Financial Support

| | Total | Caymanian | | | Non- Caymanian | | |
|-------------------------|------------|------------|------------|------------|----------------|-----------|------------|
| | | All | Male | Female | All | Male | Female |
| Total | 943 | 682 | 413 | 269 | 261 | 51 | 210 |
| Parent | 322 | 290 | 225 | 65 | 32 | ... | ... |
| Spouse/Partner | 319 | 140 | 89 | 51 | 179 | ... | 154 |
| Savings/Investments | 83 | 57 | ... | 37 | 26 | ... | ... |
| Other Relatives/Friends | 155 | 143 | 66 | 77 | ... | ... | ... |
| Social Services/Other | 64 | 52 | ... | 39 | ... | ... | ... |

Table 15B: Percentage Distribution by Source of Financial Support

| | Total | Caymanian | | | Non- Caymanian | | |
|-------------------------|-------|-----------|-------|--------|----------------|-------|--------|
| | | All | Male | Female | All | Male | Female |
| Total | 100.0 | 100.0 | 100.0 | 100.0 | 100.0 | 100.0 | 100.0 |
| Parent | 34.1 | 42.5 | 54.5 | 24.2 | 12.3 | ... | ... |
| Spouse/Partner | 33.8 | 20.5 | 21.5 | 19.0 | 68.6 | ... | 73.3 |
| Savings/Investments | 8.8 | 8.4 | 4.8 | 13.8 | 10.0 | ... | ... |
| Other Relatives/Friends | 16.4 | 21.0 | 16.0 | 28.6 | 4.6 | ... | ... |
| Social Services/Other | 6.8 | 7.6 | 3.1 | 14.5 | 4.6 | ... | ... |

Table 16A: Not in Labour Force by Status, Age Group, and Sex

| | Total | Caymanian | | | Non- Caymanian | | |
|--------------|--------------|--------------|--------------|--------------|----------------|------------|------------|
| | | All | Male | Female | All | Male | Female |
| Total | 7,284 | 6,065 | 2,496 | 3,569 | 1,219 | 344 | 875 |
| 15 - 19 | 2,121 | 1,821 | 945 | 876 | 300 | 132 | 168 |
| 20 - 24 | 277 | 214 | 109 | 105 | 63 | ... | 51 |
| 25 - 34 | 487 | 230 | 95 | 135 | 257 | 88 | 169 |
| 35 - 44 | 517 | 273 | 120 | 153 | 244 | | 244 |
| 45 - 54 | 523 | 415 | 118 | 297 | 108 | ... | 95 |
| 55 - 64 | 928 | 790 | 315 | 475 | 138 | 47 | 91 |
| 65+ | 2,431 | 2,322 | 794 | 1,528 | 109 | 52 | 57 |

Table 16B: Percentages of Not in Labour Force by Status, Age Group, and Sex

| | Total | Caymanian | | | Non- Caymanian | | |
|--------------|------------|------------|------------|------------|----------------|------------|------------|
| | | All | Male | Female | All | Male | Female |
| Total | 100 | 100 | 100 | 100 | 100 | 100 | 100 |
| 15 - 19 | 29.1 | 30.0 | 37.9 | 24.5 | 24.6 | 38.4 | 19.2 |
| 20 - 24 | 3.8 | 3.5 | 4.4 | 2.9 | 5.2 | ... | 5.8 |
| 25 - 34 | 6.7 | 3.8 | 3.8 | 3.8 | 21.1 | 25.6 | 19.3 |
| 35 - 44 | 7.1 | 4.5 | 4.8 | 4.3 | 20.0 | ... | 27.9 |
| 45 - 54 | 7.2 | 6.8 | 4.7 | 8.3 | 8.9 | ... | 10.9 |
| 55 - 64 | 12.7 | 13.0 | 12.6 | 13.3 | 11.3 | 13.7 | 10.4 |
| 65+ | 33.4 | 38.3 | 31.8 | 42.8 | 8.9 | 15.1 | 6.5 |

Table 17A: Age 15 and Over Not in the Labour Force by Educational Attainment and Status

| | Total | Caymanian | Non-Caymanian |
|--|-------|-----------|---------------|
| | 7,284 | 6,065 | 1,219 |
| Associate Degree | 213 | 188 | ... |
| Bachelors Degree | 520 | 224 | 296 |
| Graduate Degree | 139 | ... | 126 |
| Complete high | 1,753 | 1,441 | 312 |
| Incomplete high but Complete Primary | 3,275 | 3,061 | 214 |
| Incomplete Primary | 315 | 315 | ... |
| Professional Qualification Vocational or Technical | 317 | 220 | 97 |
| Diploma | 303 | 178 | 125 |
| Other | 63 | 63 | ... |
| Not classified | 386 | 362 | ... |

Table 17B: Percentage Distribution: Age 15 and Over Not in the Labour Force by Educational Attainment and Status

| | Total | Caymanian | Non-Caymanian |
|--|-------|-----------|---------------|
| | 100.0 | 100.0 | 100.0 |
| Associate Degree | 2.9 | 3.1 | ... |
| Bachelors Degree | 7.1 | 3.7 | 24.3 |
| Graduate Degree | 1.9 | ... | 10.3 |
| Complete high | 24.1 | 23.8 | 25.6 |
| Incomplete high but Complete Primary | 45.0 | 50.5 | 17.6 |
| Incomplete Primary | 4.3 | 5.2 | ... |
| Professional Qualification Vocational or Technical | 4.4 | 3.6 | 8.0 |
| Diploma | 4.2 | 2.9 | 10.3 |
| Other | 0.9 | 1.0 | ... |
| Not classified | 5.3 | 6.0 | ... |

A large, light green rectangular box with a double red border. Inside the box, the text 'Frequency Tables' is centered in a bold, black, serif font.

Frequency Tables

| Table 18: Not in Labour Force: Main Means of Financial Support | | |
|---|-----------|------------|
| | Frequency | Percentage |
| Parent | 159 | 31.0 |
| Spouse/ Partner | 105 | 20.5 |
| Other Relatives/Friends | 53 | 10.3 |
| Savings/Investments | 82 | 16.0 |
| Social Services | 32 | 6.2 |
| Pensions/Vet/Seaman | 67 | 13.1 |
| Others | 15 | 2.9 |

| Table 19: Not in the Labour Force: Major Reason for Not Seeking Work | | |
|---|-----------|------------|
| | Frequency | Percentage |
| In school | 152 | 29.6 |
| House Keeping | 56 | 10.9 |
| Retired/Elderly | 201 | 39.2 |
| Disabled | 41 | 8.0 |
| Temporary Illness | 17 | 3.3 |
| Did Not Want to Work | 17 | 3.3 |
| Not eligible for or Awaiting Work Permit | 9 | 1.8 |
| Others | 20 | 3.9 |

| Table 20: Employed Persons: Reasons for Working Less Than 30 Hrs | | |
|---|-----------|------------|
| | Frequency | Percentage |
| Vacation | 27 | 23.9 |
| Maternity/Paternity | 3 | 2.7 |
| Sick | 5 | 4.4 |
| In Training/School | 11 | 9.7 |
| Own Choice | 32 | 28.3 |
| Only Hours Available | 27 | 23.9 |
| Others | 8 | 7.1 |

| Table 21: Number of Persons per Household | | |
|--|-----------|------------|
| Persons | Frequency | Percentage |
| 1 | 379 | 24.9 |
| 2 | 516 | 33.9 |
| 3 | 257 | 16.9 |
| 4 | 188 | 12.4 |
| 5 | 89 | 5.9 |
| 6 | 60 | 3.9 |
| 7 | 16 | 1.1 |
| 8 | 7 | 0.5 |
| 9 | 4 | 0.3 |
| 10 | 3 | 0.2 |
| 14 | 1 | 0.1 |
| 15 | 1 | 0.1 |

| Table 22: Households Having Building Insurance | | |
|---|-----------|------------|
| | Frequency | Percentage |
| Yes | 803 | 53.8 |
| No | 563 | 37.7 |
| Don't Know | 126 | 8.4 |

| Table 23: Households Having Building Content Insurance | | |
|---|-----------|------------|
| | Frequency | Percentage |
| Yes | 547 | 36.6 |
| No | 805 | 53.9 |
| Don't Know | 141 | 9.4 |

| Table 24: Number of Vehicles per Household | | |
|---|-----------|------------|
| Vehicles | Frequency | Percentage |
| 1 | 638 | 52.4 |
| 2 | 436 | 35.8 |
| 3 | 109 | 9.0 |
| Others | 34 | 2.8 |

| Table 25: Number of Computers per Household | | |
|--|-----------|------------|
| Computers | Frequency | Percentage |
| 0 | 678 | 45.2 |
| 1 | 622 | 41.4 |
| 2 | 141 | 9.4 |
| Others | 60 | 4.0 |

| Table 26: Number of Cellular phones per Household | | |
|--|-----------|------------|
| Cellular phones | Frequency | Percentage |
| 0 | 67 | 4.5 |
| 1 | 411 | 27.4 |
| 2 | 645 | 43.0 |
| 3 | 200 | 13.3 |
| 4 | 101 | 6.7 |
| Others | 77 | 5.1 |

| Table 27: Number of Fixed Line Telephones per Household | | |
|--|-----------|------------|
| Fixed Phones | Frequency | Percentage |
| 0 | 754 | 50.2 |
| 1 | 636 | 42.4 |
| 2 | 98 | 6.5 |
| Others | 13 | 0.9 |

| Table 28: Number of Households Having Highspeed Internet | | |
|---|-----------|------------|
| Persons | Frequency | Percentage |
| Not stated | 8 | 0.5 |
| Yes | 628 | 41.8 |
| No | 865 | 57.6 |

| Table 29: Number of Households Having Cable TV/Satellite | | |
|---|-----------|------------|
| Persons | Frequency | Percentage |
| Not stated | 7 | 0.5 |
| Yes | 1139 | 75.9 |
| No | 355 | 23.7 |

| Table 30: Number of Households Having Dial-up Internet | | |
|---|-----------|------------|
| Persons | Frequency | Percentage |
| Not stated | 9 | 0.6 |
| Yes | 119 | 7.9 |
| No | 1373 | 91.5 |

| Table 31: House Ownership | | |
|----------------------------------|-----------|------------|
| | Frequency | Percentage |
| Owned with Mortgage | 400 | 26.6 |
| Owned without Mortgage | 303 | 20.2 |
| Provided Rent-Free | 70 | 4.7 |
| Rented | 726 | 48.4 |
| Others | 2 | 0.1 |

| Table 32: Type of House | | |
|--------------------------------|-----------|------------|
| | Frequency | Percentage |
| Not Stated | 2 | 0.1 |
| Detached House | 679 | 45.2 |
| Duplex/Town House | 621 | 41.3 |
| One Bedroom/Studio | 195 | 13.0 |
| Others | 6 | 0.4 |

| Table 33: Expenditure on Food and Non-Alcoholic Beverages Per Month | | |
|--|-----------|------------|
| | Frequency | Percentage |
| Not Stated | 1 | 0.1 |
| Below \$500 | 741 | 49.1 |
| \$500 - \$999 | 604 | 40.1 |
| \$1,000 - \$2,499 | 152 | 10.1 |
| \$2,500 - \$4,999 | 10 | 0.7 |

| Table 34: Expenditure on Alcoholic & Tobacco Products Per Month | | |
|--|-----------|------------|
| | Frequency | Percentage |
| Not Stated | 5 | 0.3 |
| Below \$500 | 1457 | 96.6 |
| \$500 - \$999 | 43 | 2.9 |
| \$1,000 - \$2,499 | 2 | 0.1 |
| \$2,500 - \$4,999 | 1 | 0.1 |

| Table 35: Expenditure on Housing (Rental, Mortgage, Utilities etc) Per Month | | |
|---|-----------|------------|
| | Frequency | Percentage |
| Not Stated | 2 | 0.1 |
| Below \$500 | 444 | 29.4 |
| \$500 - \$999 | 345 | 22.9 |
| \$1,000 - \$2,499 | 525 | 34.8 |
| \$2,500 - \$4,999 | 177 | 11.7 |
| \$5,000 - \$7,499 | 10 | 0.7 |
| \$7,500 + | 5 | 0.3 |

| Table 36: Expenditure on Clothing (Including Shoes) Per Month | | |
|--|-----------|------------|
| | Frequency | Percentage |
| Not Stated | 2 | 0.1 |
| Below \$500 | 1406 | 93.2 |
| \$500 - \$999 | 73 | 4.8 |
| \$1,000 - \$2,499 | 26 | 1.7 |
| \$2,500 - \$4,999 | 1 | 0.1 |

| Table 37: Expenditure on Household Supplies Per Month | | |
|--|-----------|------------|
| | Frequency | Percentage |
| Not Stated | 2 | 0.1 |
| Below \$500 | 1471 | 97.5 |
| \$500 - \$999 | 31 | 2.1 |
| \$1,000 - \$2,499 | 4 | 0.3 |

| Table 38: Expenditure on Travel and Communication Per Month | | |
|--|-----------|------------|
| | Frequency | Percentage |
| Not Stated | 1 | 0.1 |
| Below \$500 | 1145 | 75.9 |
| \$500 - \$999 | 207 | 13.7 |
| \$1,000 - \$2,499 | 106 | 7.0 |
| \$2,500 - \$4,999 | 37 | 2.5 |
| \$5,000 - \$7,499 | 8 | 0.5 |
| \$7,500 + | 4 | 0.3 |

| Table 39: Expenditure on Education Per Month | | |
|---|-----------|------------|
| | Frequency | Percentage |
| Not Stated | 3 | 0.2 |
| Below \$500 | 1330 | 88.2 |
| \$500 - \$999 | 91 | 6.0 |
| \$1,000 - \$2,499 | 57 | 3.8 |
| \$2,500 - \$4,999 | 19 | 1.3 |
| \$5,000 - \$7,499 | 3 | 0.2 |
| \$7,500 + | 5 | 0.3 |

| Table 40: Expenditure on Medical Services Per Month | | |
|--|-----------|------------|
| | Frequency | Percentage |
| Not Stated | 3 | 0.2 |
| Below \$500 | 1378 | 91.4 |
| \$500 - \$999 | 82 | 5.4 |
| \$1,000 - \$2,499 | 33 | 2.2 |
| \$2,500 - \$4,999 | 3 | 0.2 |
| \$5,000 - \$7,499 | 3 | 0.2 |
| \$7,500 + | 6 | 0.4 |

| Table 41: Expenditure on Personal Goods and Services Per Month | | |
|---|-----------|------------|
| | Frequency | Percentage |
| Not Stated | 6 | 0.4 |
| Below \$500 | 1372 | 91.0 |
| \$500 - \$999 | 103 | 6.8 |
| \$1,000 - \$2,499 | 24 | 1.6 |
| \$2,500 - \$4,999 | 2 | 0.1 |
| \$5,000 - \$7,499 | 1 | 0.1 |

| | Frequency | Percentage |
|------------------------------------|-----------|------------|
| Head | 1,521 | 38.0 |
| Spouse/Partner | 724 | 18.1 |
| Child of Head, Spouse or Parent | 947 | 23.7 |
| Other Relative | 475 | 11.9 |
| Live-in Domestic | 42 | 1.0 |
| Non-Relative | 293 | 7.3 |